

HS 5150 MT 3~ 430

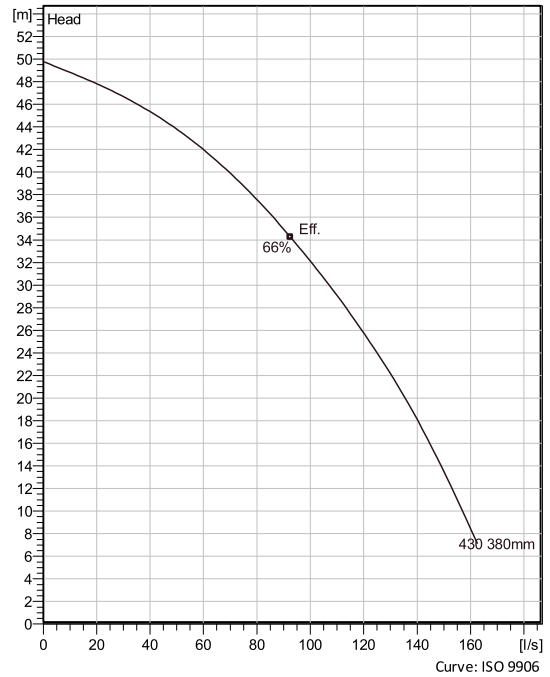
Heavy duty slurry pumps. Highly wear resistant channel impeller with possibility to ad agitator. Submerged or dry installation



Technical specification



Curves according to: Water, pure Water, pure [100%], 4 °C, 999.9 kg/m³, 1.5692 mm²/s



Configuration

Motor number HS150.350 35-25-4AA-W 55KW	Installation type S - Portable Semi permanent, Wet
Impeller diameter 380 mm	Discharge diameter 150 mm

Pump information

Impeller diameter 380 mm
Discharge diameter 150 mm
Inlet diameter 150 mm
Maximum operating speed 1475 rpm
Number of blades 3
Throughlet diameter 40 mm
Max. fluid temperature 40 °C

Materials

Impeller Hard-Iron

Project
Block

Created by
Created on 1/14/2022 **Last update** 1/14/2022

HS 5150 MT 3~ 430

Technical specification



Motor - General

Motor number H5150.350 35-25-4AA-W 55KW	Phases 3~	Rated speed 1475 rpm	Rated power 55 kW
Approval No	Number of poles 4	Rated current 103 A	Stator variant 1
Frequency 50 Hz	Rated voltage 400 V	Insulation class H	Type of Duty S1
Version code 350			

Motor - Technical

Power factor - 1/1 Load 0.84	Motor efficiency - 1/1 Load 92.0 %	Total moment of inertia 1.27 kg m ²	Starts per hour max. 30
Power factor - 3/4 Load 0.81	Motor efficiency - 3/4 Load 93.0 %	Starting current, direct starting 435 A	
Power factor - 1/2 Load 0.73	Motor efficiency - 1/2 Load 93.5 %	Starting current, star-delta 145 A	

Project
Block

Created by
Created on 1/14/2022 **Last update** 1/14/2022

HS 5150 MT 3~ 430

Performance curve

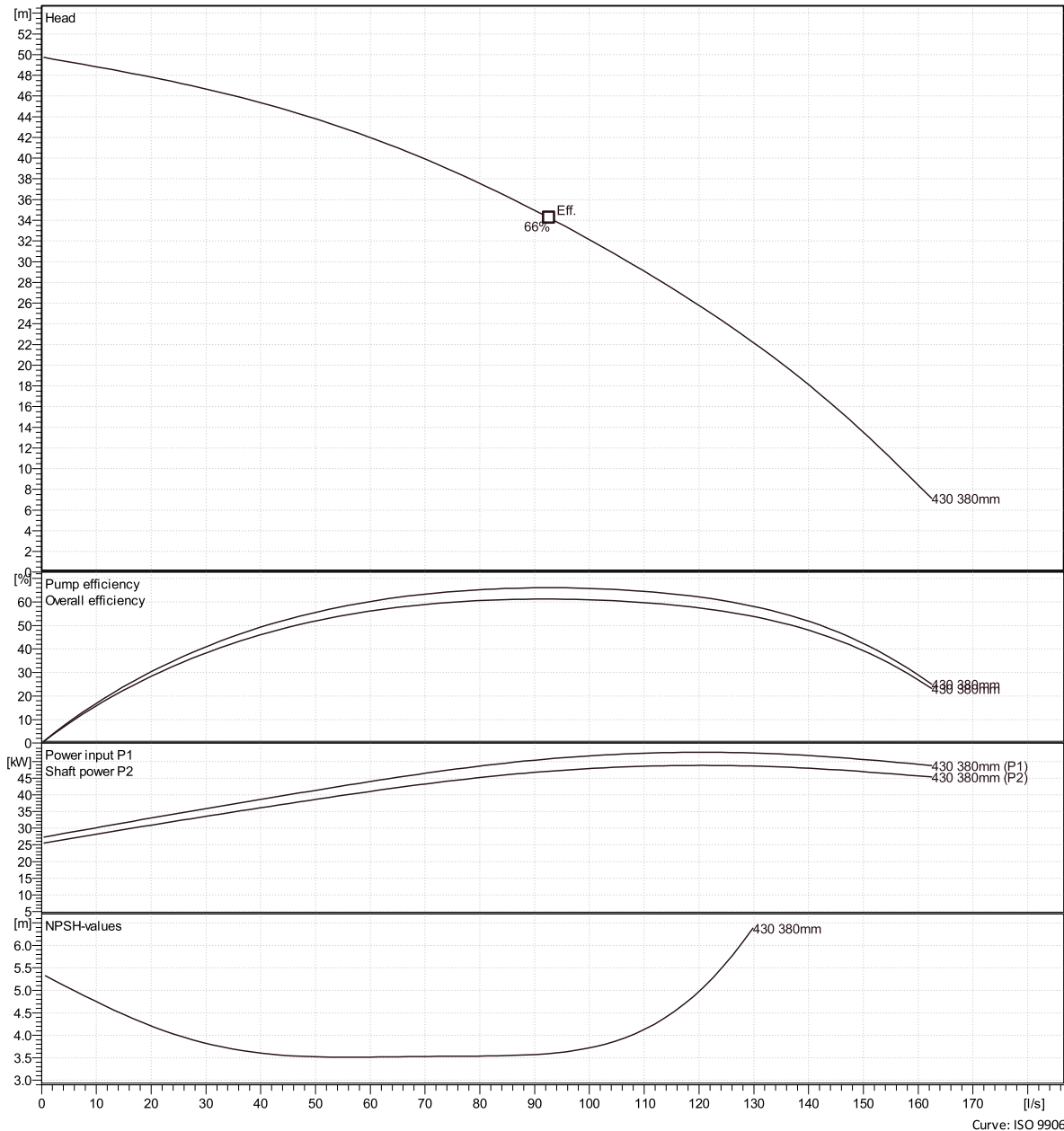


Duty point

Flow

Head

Curves according to: Water, pure Water, pure [100%], 4 °C, 999.9 kg/m³, 1.5692 mm²/s



Curve: ISO 9906

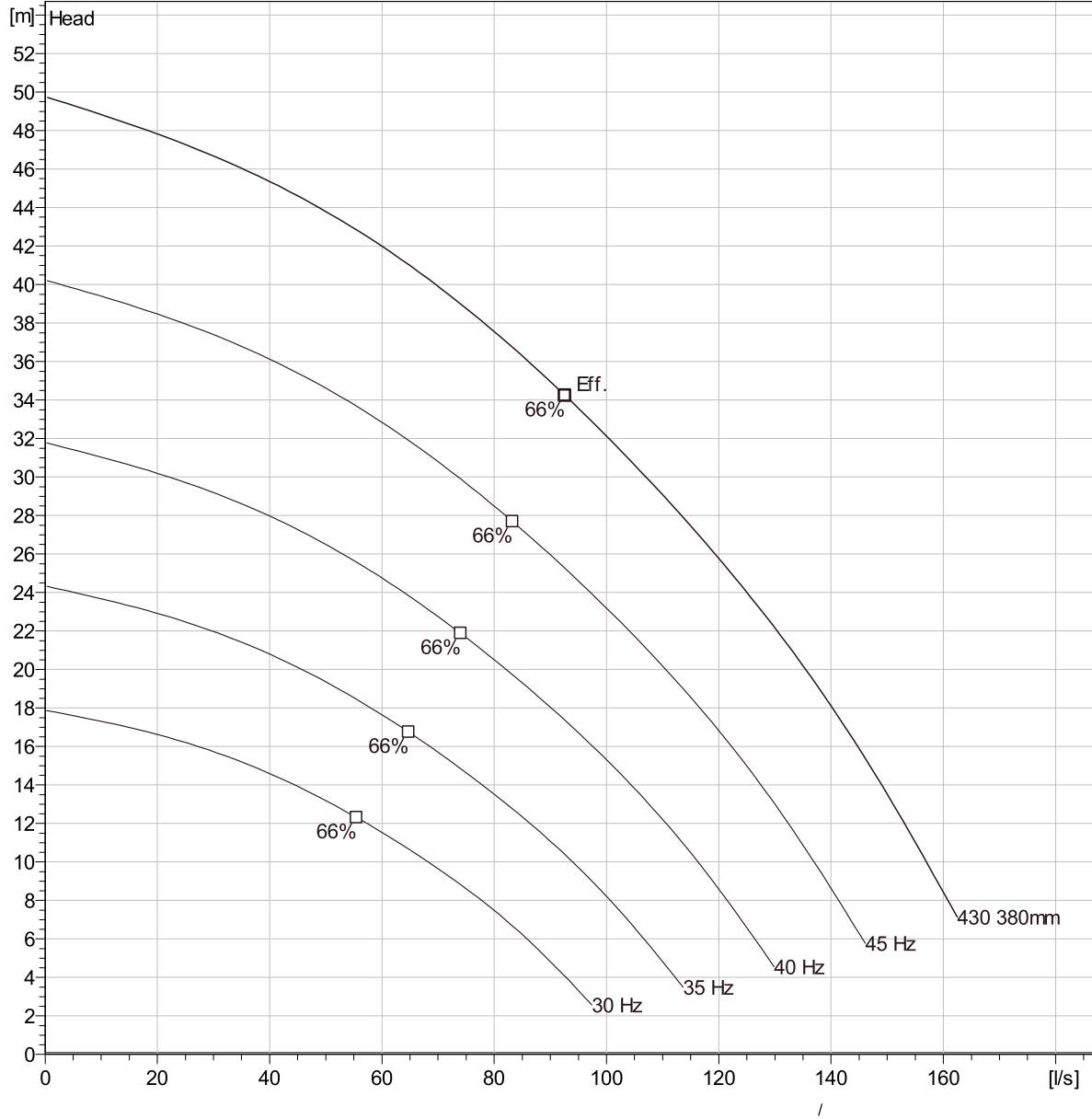
Project	Created by	
Block	Created on	Last update
	1/14/2022	1/14/2022

HS 5150 MT 3~ 430

Duty Analysis



Curves according to: Water, pure [100%]; 4°C; 999.9kg/m³; 1.5692mm²/s



Operating characteristics

Pumps / Systems	Flow l/s	Head m	Shaft power kW	Flow l/s	Head m	Shaft power kW	Hydr. eff.	Spec. Energy kWh/m³	NPSHre m
-----------------	-------------	-----------	-------------------	-------------	-----------	-------------------	------------	------------------------	-------------

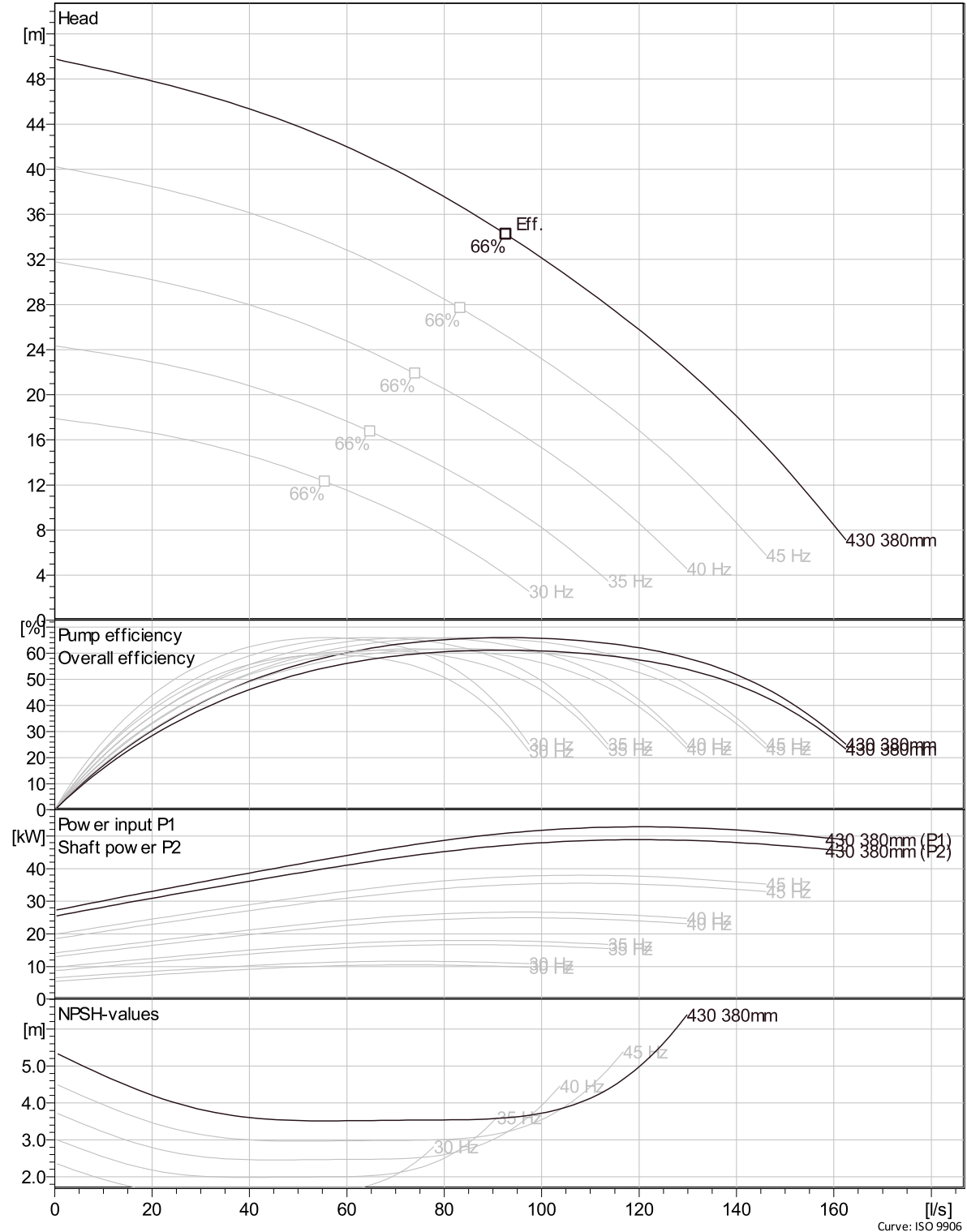
Project	Created by		
Block	Created on	1/14/2022	Last update 1/14/2022

HS 5150 MT 3~ 430

VFD Curve



Curves according to: Water, pure, 4 °C, 999.9 kg/m³, 1.5692 mm²/s



Project	Created by		
Block	Created on	1/14/2022	Last update 1/14/2022

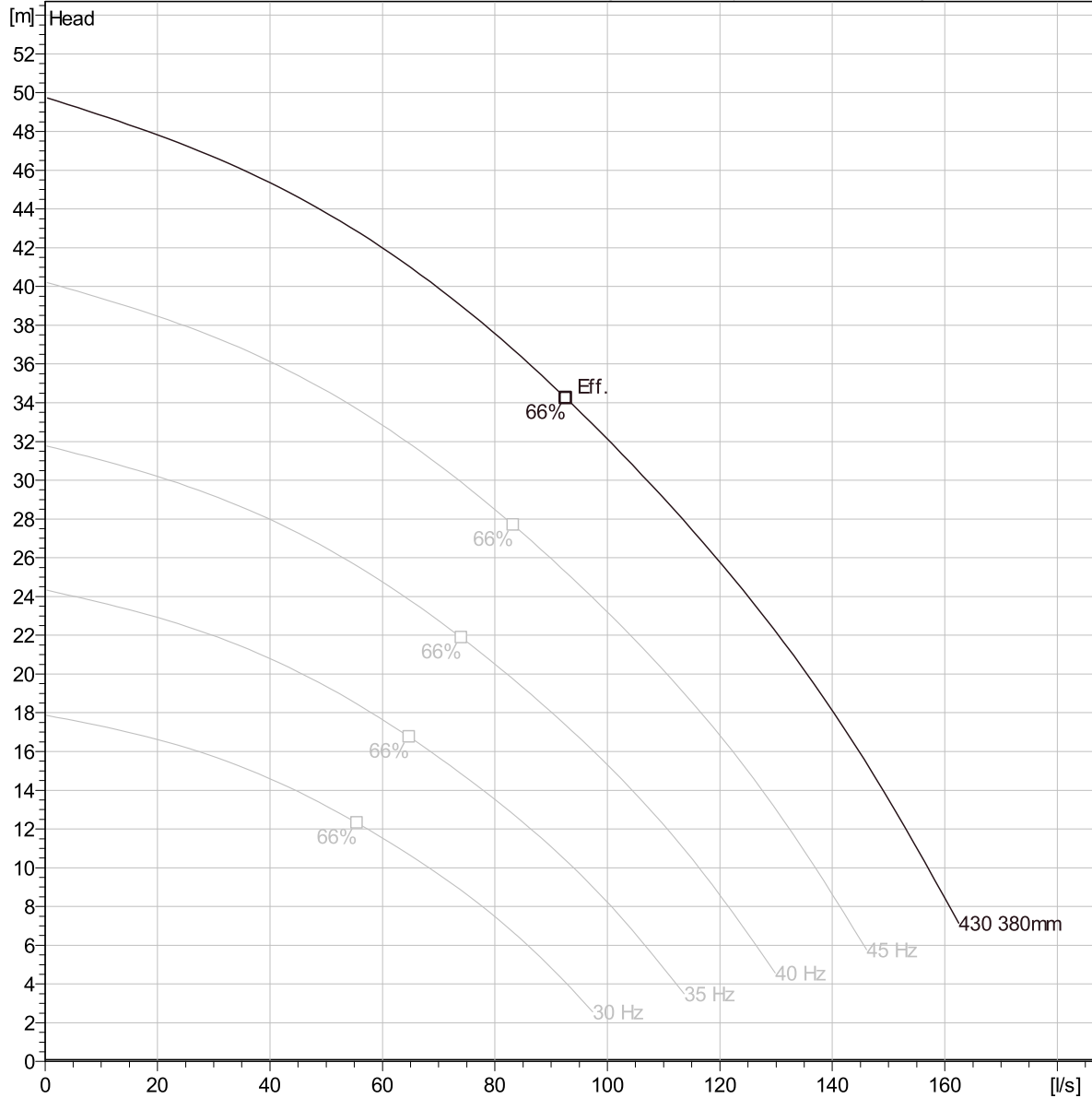
Curve: ISO 9906

HS 5150 MT 3~ 430

VFD Analysis



Curves according to: Water, pure [100%]; 4°C; 999.9kg/m³; 1.5692mm²/s



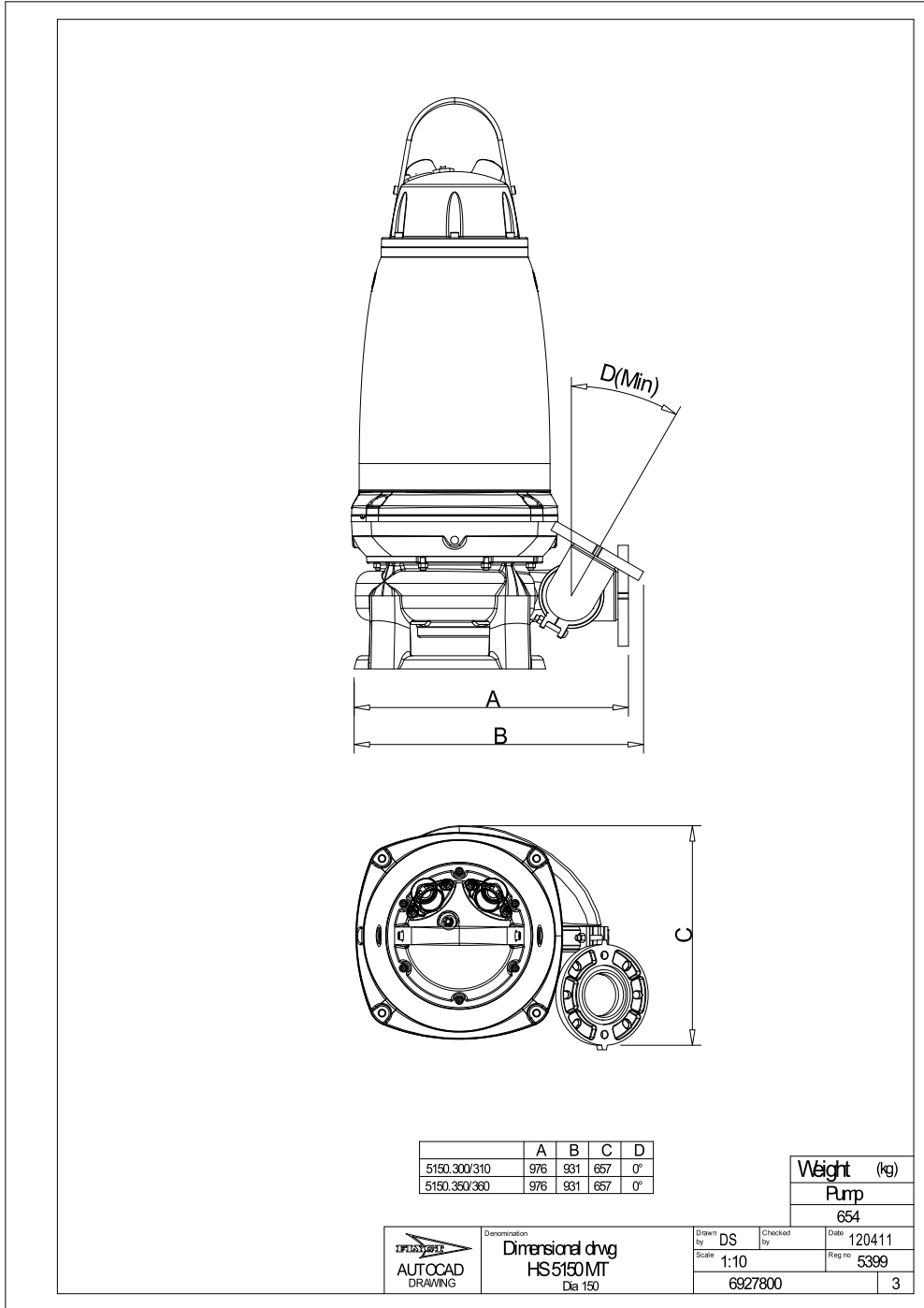
Operating Characteristics

Pumps / Systems	Frequency	Flow	Head	Shaft power	Flow	Head	Shaft power	Hydr. eff.	Specific energy	NPSHre
		l/s	m	kW	l/s	m	kW		kWh/m³	m

Project	Created by			
Block	Created on	1/14/2022	Last update	1/14/2022

HS 5150 MT 3~ 430

Dimensional drawing



Project Block Created by Created on 1/14/2022 Last update 1/14/2022