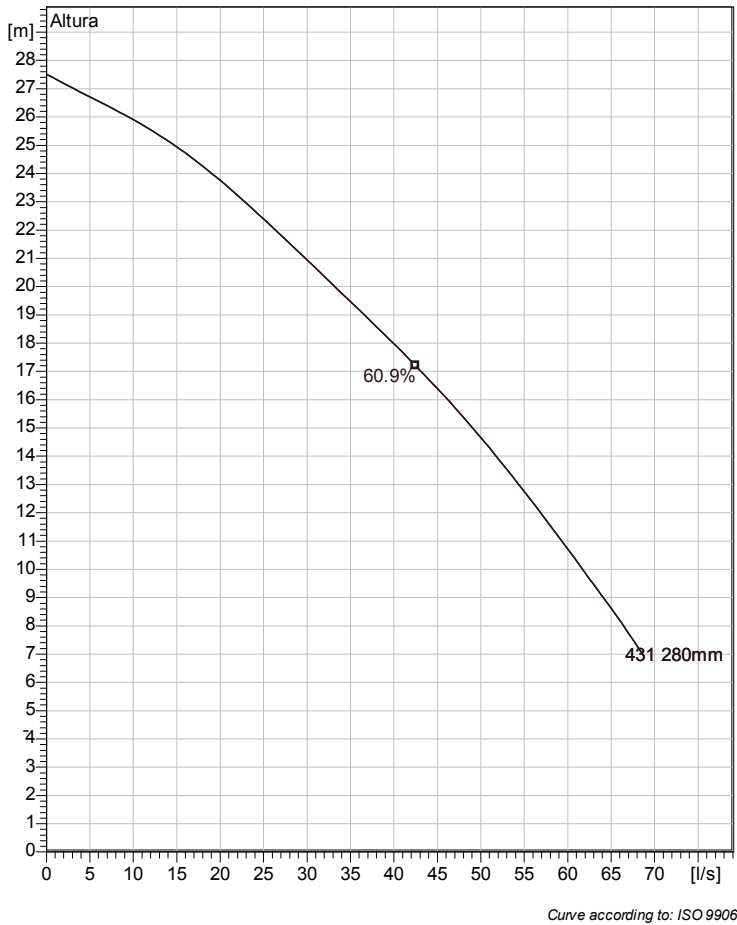


## HS 5100 MT 3~ 431

### Especificação técnica



Note: Picture might not correspond to the current configuration.

#### General

Heavy duty slurry pumps. Highly wear resistant channel impeller with possibility to add agitator. Submerged or dry installation

#### Impeller

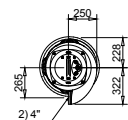
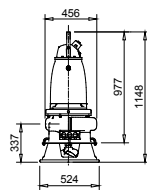
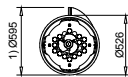
Impeller material	Hard-Iron <sup>TM</sup>
Largura de saída	100 mm
Inlet diameter	150 mm
Impeller diameter	280 mm
Number of blades	3
Diâmetro passagem	40 mm

#### Motor

Motor #	H5100.211 21-18-4AA-W 13,5KW
Variante do estator	
Frequência	50 Hz
Tensão nominal	400 V
Nr.º de pólos	4
Fases	3~
Potência nominal	13.5 kW
Corrente nominal	28 A
Corrente de arranque	150 A
Velocidade nominal	1455 1/min
Factor de potência	
1/1 Load	0.82
3/4 Load	0.76
1/2 Load	0.64
Eficiência	
1/1 Load	86.5 %
3/4 Load	88.0 %
1/2 Load	88.0 %

#### Configuração

Installation: S - Portátil Semi permanente, Molhado



1) Min. diameter.  
2) Designed for "Victaulic Coupling"

Weight

Dimensional dwg  
HS 5100.211.221

Projecto	ID do projecto	Criado por	Criado em <b>2012-02-13</b>	Última actualização
----------	----------------	------------	--------------------------------	---------------------

## HS 5100 MT 3~ 431

### Curva de desempenho

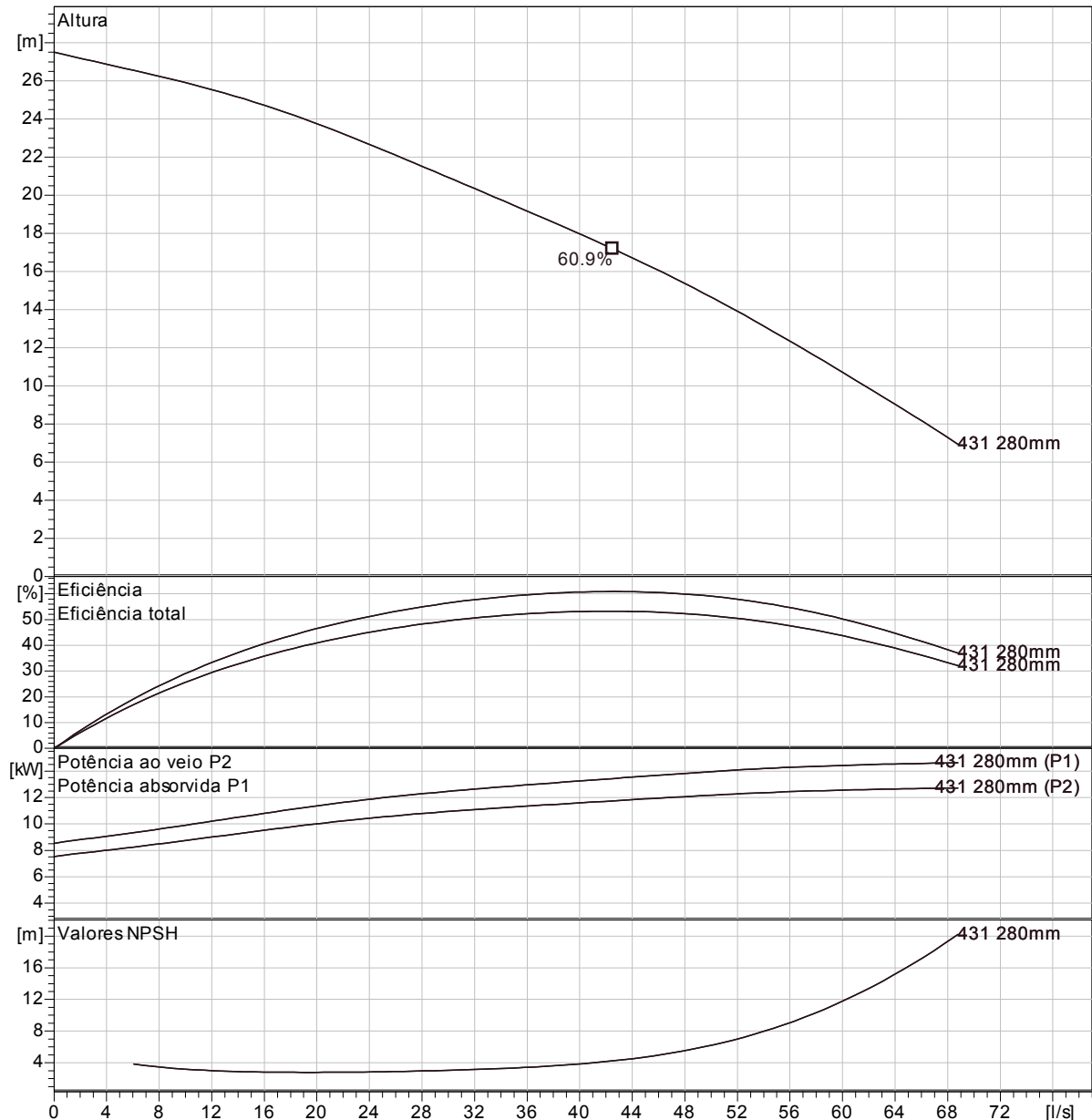
#### Bomba

Largura de saída	100 mm
Inlet diameter	150 mm
Impeller diameter	280 mm
Number of blades	3
Diâmetro passagem	40 mm

#### Motor

Motor #	H5100.211 21-18-4AA-W 13,5KW
Stator variant	
Frequência	50 Hz
Rated voltage	400 V
Nr.º de pólos	4
Fases	3~
Potência nominal	13.5 kW
Corrente nominal	28 A
Corrente de arranque	150 A
Velocidade nominal	1455 1/min

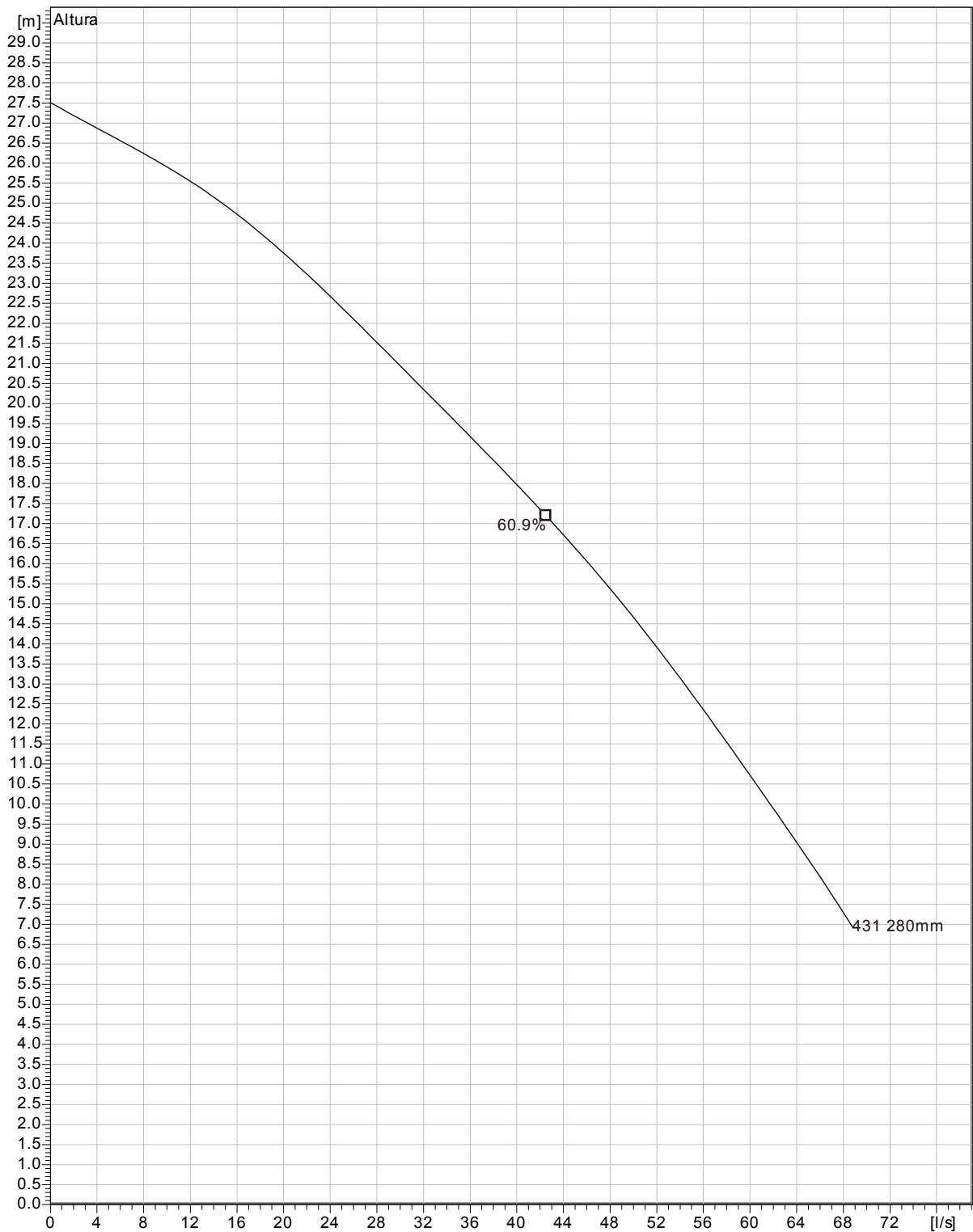
Factor de potência	
1/1 Load	0.82
3/4 Load	0.76
1/2 Load	0.64
Eficiência	
1/1 Load	86.5 %
3/4 Load	88.0 %
1/2 Load	88.0 %



Curve according to: ISO 9906

Projecto	ID do projecto	Criado por	Criado em <b>2012-02-13</b>	Última actualização
----------	----------------	------------	--------------------------------	---------------------

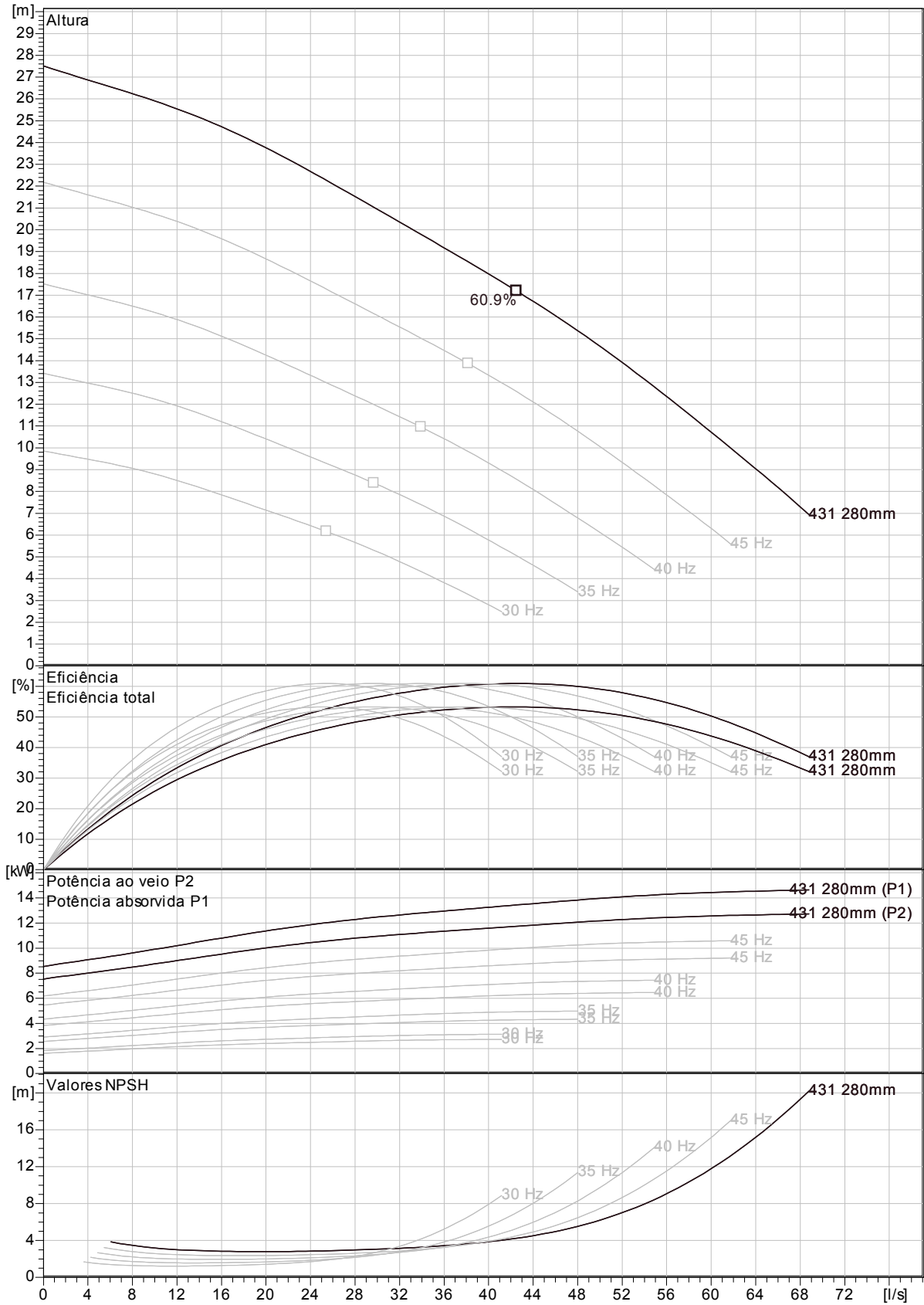
**HS 5100 MT 3~ 431**  
Duty Analysis



Curve according to: ISO 9906

Projecto	ID do projecto	Criado por	Criado em <b>2012-02-13</b>	Última actualização
----------	----------------	------------	--------------------------------	---------------------

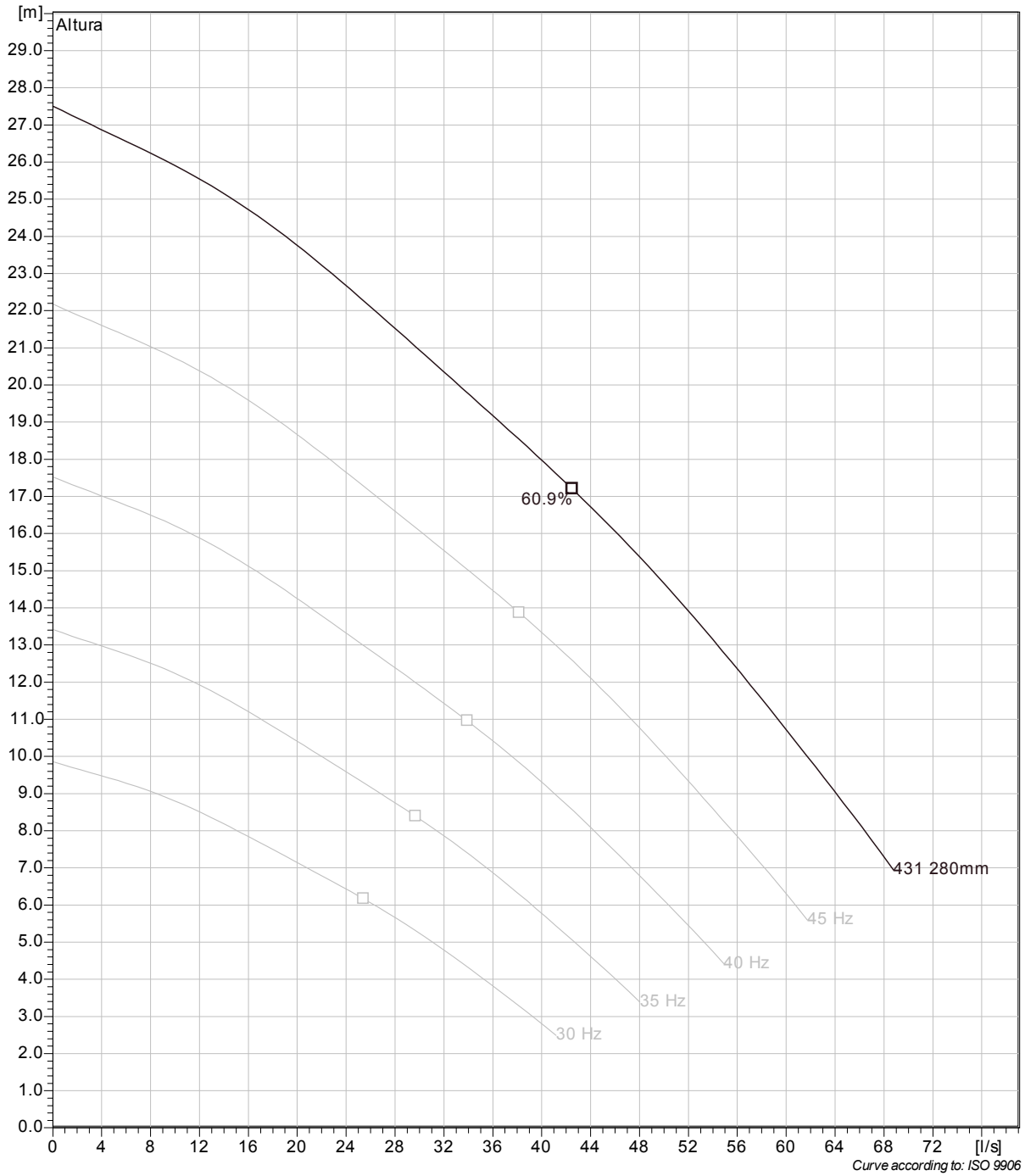
**HS 5100 MT 3~ 431**  
VFD Curve



Curve according to: ISO 9906

Projecto	ID do projecto	Criado por	Criado em <b>2012-02-13</b>	Última actualização
----------	----------------	------------	--------------------------------	---------------------

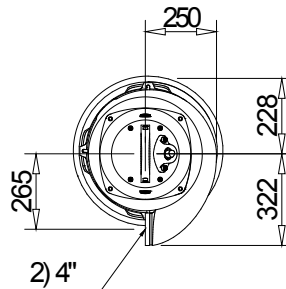
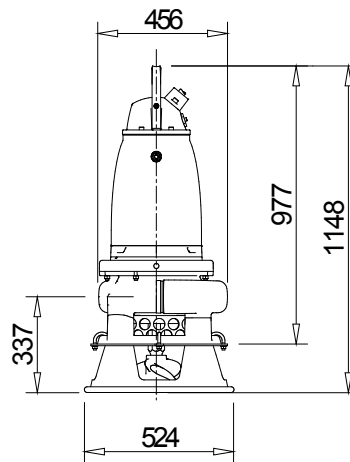
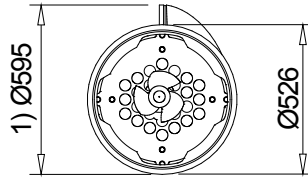
**HS 5100 MT 3~ 431**  
VFD Analysis



50 Hz    45 Hz    40 Hz    35 Hz    30 Hz

Projecto	ID do projecto	Criado por	Criado em <b>2012-02-13</b>	Última actualização
----------	----------------	------------	--------------------------------	---------------------

**HS 5100 MT 3~ 431**  
Dimensional drawing



1) Mn. diameter.  
2) Designed for "Victaulic Coupling"

Weight

Dimensional drwg  
HS 5100.211,221

Projecto	ID do projecto	Criado por	Criado em 2012-02-13	Última actualização
----------	----------------	------------	-------------------------	---------------------