

## KS 2610 MT 3~ 234

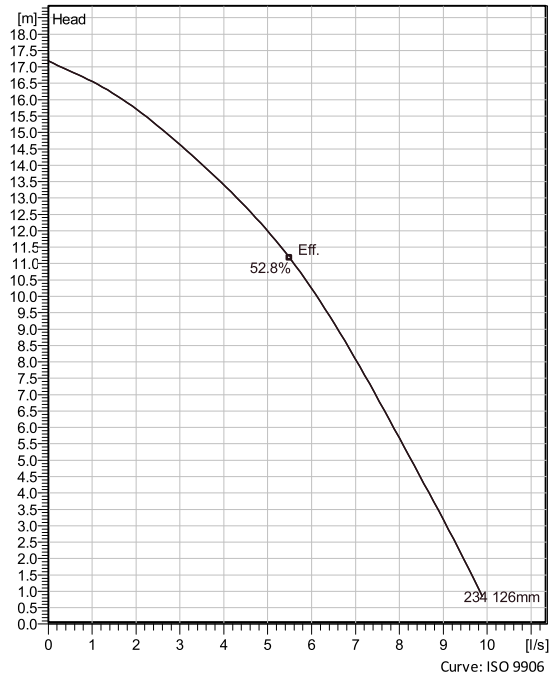
Portable pumps ideal for applications in which the water or liquid contains concentrations of abrasives when clogging problems can occur



### Technical specification



Curves according to: Water, pure [100%], 4 °C, 1000 kg/m<sup>3</sup>, 1.569 mm<sup>2</sup>/s



### Configuration

<b>Motor number</b> K2610.172 13-06-2BB-W 1.2KW	<b>Installation type</b> S - Portable Semi permanent, Wet
<b>Impeller diameter</b> 126 mm	<b>Discharge diameter</b> 50 mm

### Pump information

<b>Impeller diameter</b> 126 mm
<b>Discharge diameter</b> 50 mm
<b>Inlet diameter</b> 72 mm
<b>Maximum operating speed</b> 2740 rpm
<b>Number of blades</b> 2
<b>Max. fluid temperature</b> 40 °C

### Materials

<b>Impeller</b> Hard-Iron
------------------------------

Project  
Block

Created by  
Created on 11/5/2020

Last update

11/5/2020

# KS 2610 MT 3~ 234

## Technical specification



### Motor - General

<b>Motor number</b> K2610.172 13-06-2BB-W 1.2KW	<b>Phases</b> 3~	<b>Rated speed</b> 2740 rpm	<b>Rated power</b> 1.2 kW
<b>Approval</b> No	<b>Number of poles</b> 2	<b>Rated current</b> 2.7 A	<b>Stator variant</b> 8
<b>Frequency</b> 50 Hz	<b>Rated voltage</b> 400 V	<b>Insulation class</b> F	<b>Type of Duty</b> S1
<b>Version code</b> 172			

### Motor - Technical

<b>Power factor - 1/1 Load</b> 0.87	<b>Motor efficiency - 1/1 Load</b> 75.1 %	<b>Total moment of inertia</b> 0.0028 kg m <sup>2</sup>	<b>Starts per hour max.</b> 15
<b>Power factor - 3/4 Load</b> 0.82	<b>Motor efficiency - 3/4 Load</b> 78.8 %	<b>Starting current, direct starting</b> 12 A	
<b>Power factor - 1/2 Load</b> 0.70	<b>Motor efficiency - 1/2 Load</b> 79.8 %	<b>Starting current, star-delta</b> 4 A	

Project  
Block

Created by  
Created on 11/5/2020

Last update 11/5/2020

# KS 2610 MT 3~ 234

## Performance curve

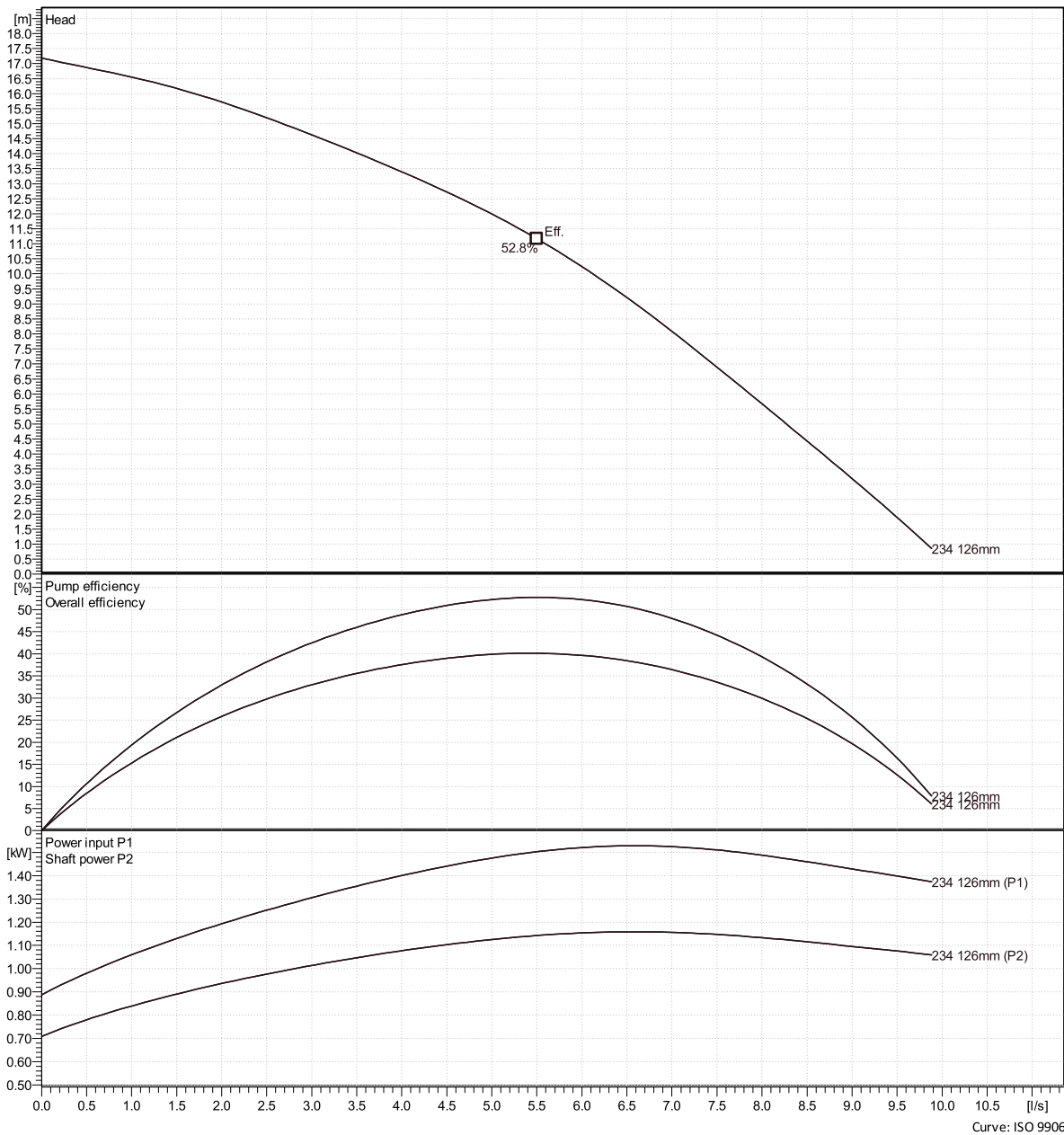


### Duty point

Flow

Head

Curves according to: Water, pure [100%], 4 °C, 1000 kg/m<sup>3</sup>, 1.569 mm<sup>2</sup>/s



Project  
Block

Created by  
Created on 11/5/2020

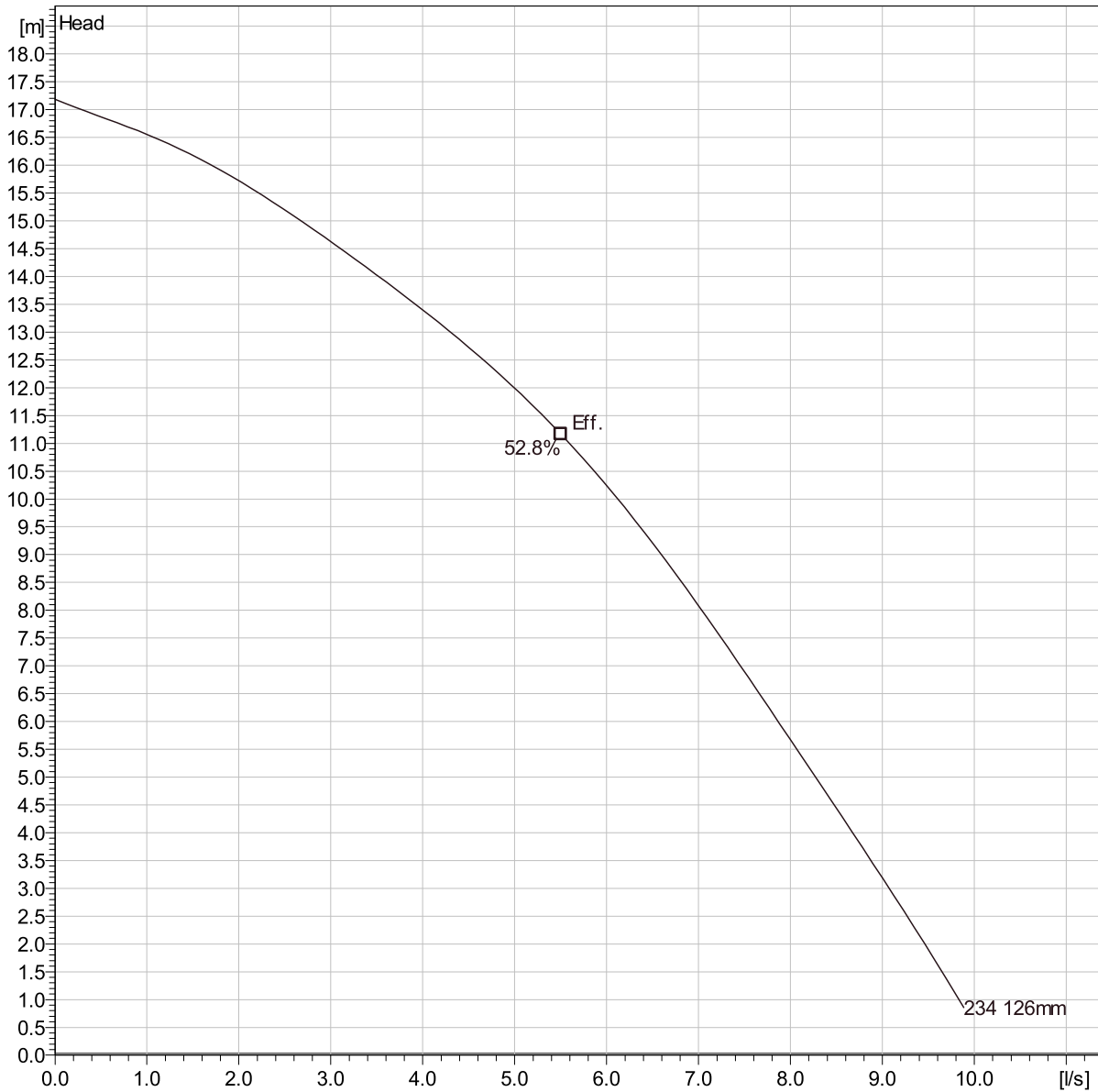
Last update 11/5/2020

# KS 2610 MT 3~ 234

## Duty Analysis



Curves according to: Water, pure [100%]; 4°C; 1000kg/m<sup>3</sup>; 1.569mm<sup>2</sup>/s



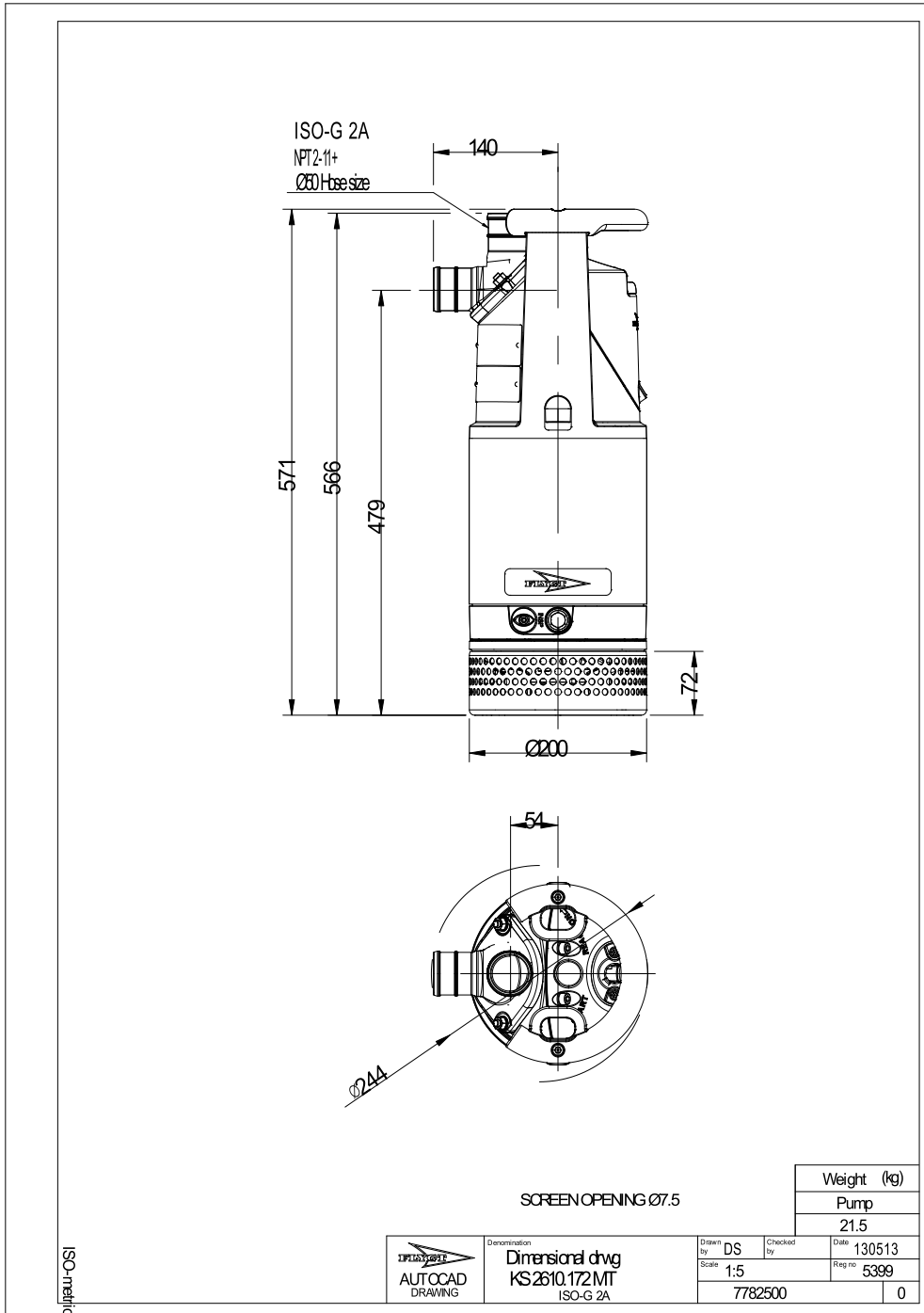
### Operating characteristics

Pumps / Systems	Flow	Head	Shaft power	Flow	Head	Shaft power	Hydr.eff.	Specific Energy	NPSHre

Project	Created by	Last update	11/5/2020
Block	Created on		

# KS 2610 MT 3~ 234

Dimensional drawing



Project	Created by	Last update	11/5/2020
Block	Created on	11/5/2020	