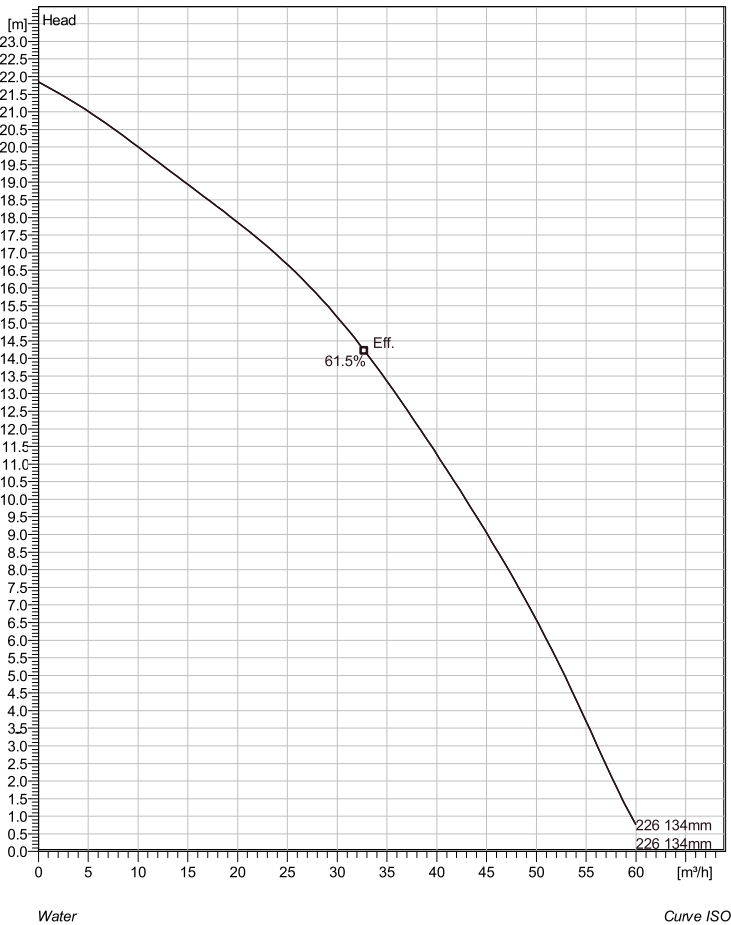


## BS 2620 MT 3~ 226 Technical specification



Note: Picture might not correspond to the current configuration.

### General

Portable pumps ideal for applications in which the water or liquid contains concentrations of abrasives.

### Impeller

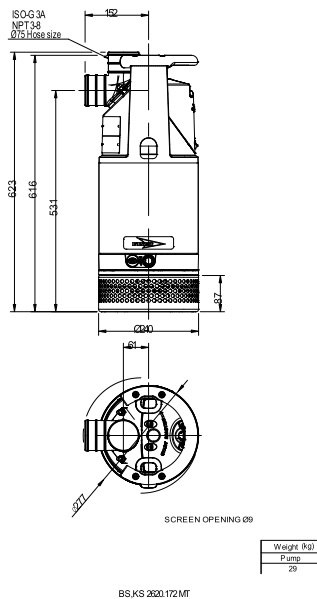
Impeller material	Hard-Iron
Discharge Flange Diameter	75 mm
Suction Flange Diameter	63 mm
Impeller diameter	134 mm
Number of blades	5

### Motor

Motor #	B2620.172 13-10-2BB-W 2.2KW Standard
Stator variant	18
Frequency	50 Hz
Rated voltage	400 V
Number of poles	2
Phases	3~
Rated power	2.2 kW
Rated current	4.7 A
Starting current	27 A
Rated speed	2800 rpm
Power factor	
1/1 Load	0.88
3/4 Load	0.83
1/2 Load	0.72
Motor efficiency	
1/1 Load	79.5 %
3/4 Load	82.0 %
1/2 Load	82.3 %

### Configuration

### Installation: S - Portable Semi permanent, Wet



Project	Project ID	Created by	Created on 4/13/2018	Last update
---------	------------	------------	-------------------------	-------------

## BS 2620 MT 3~ 226

### Performance curve

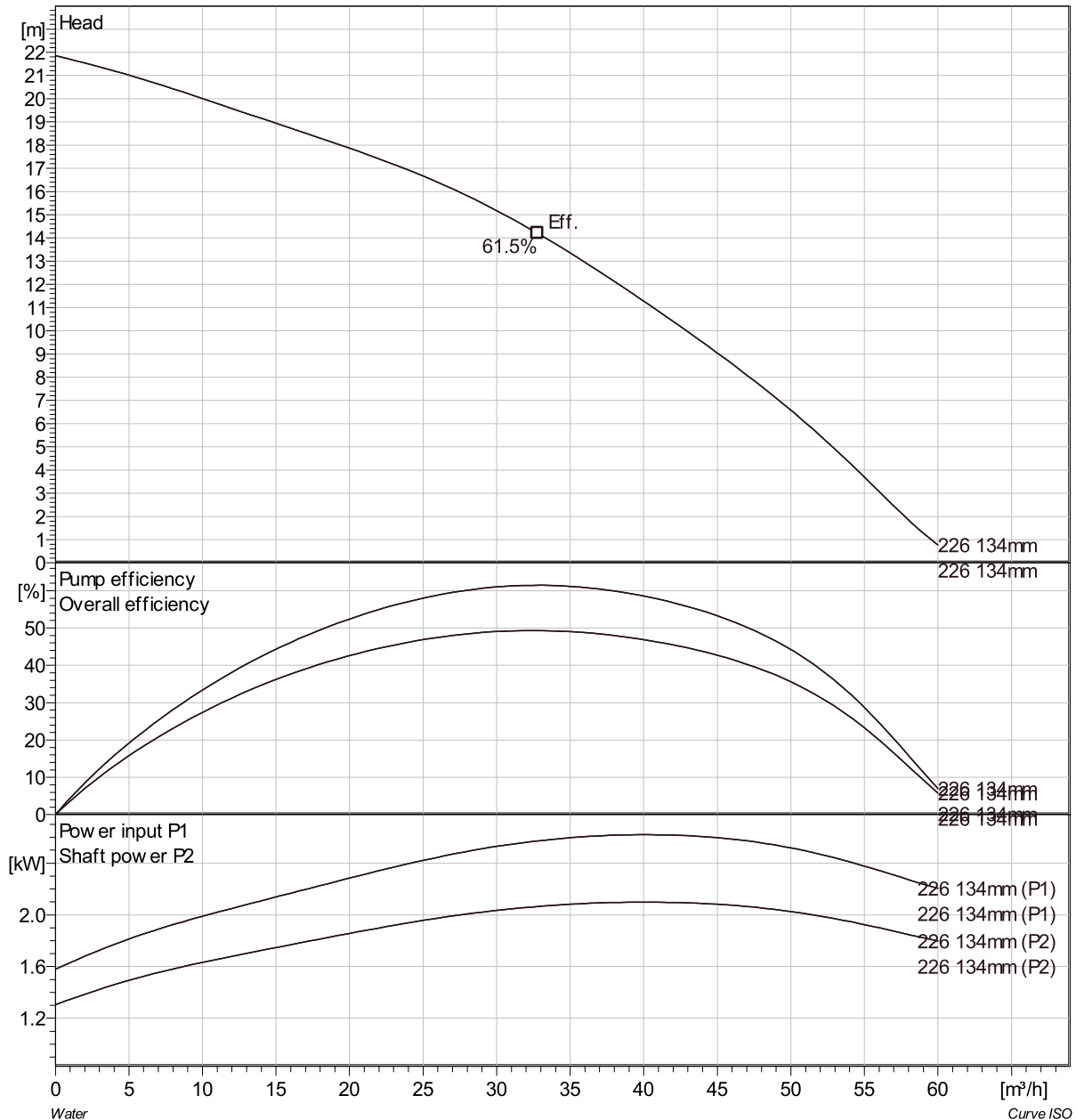
#### Pump

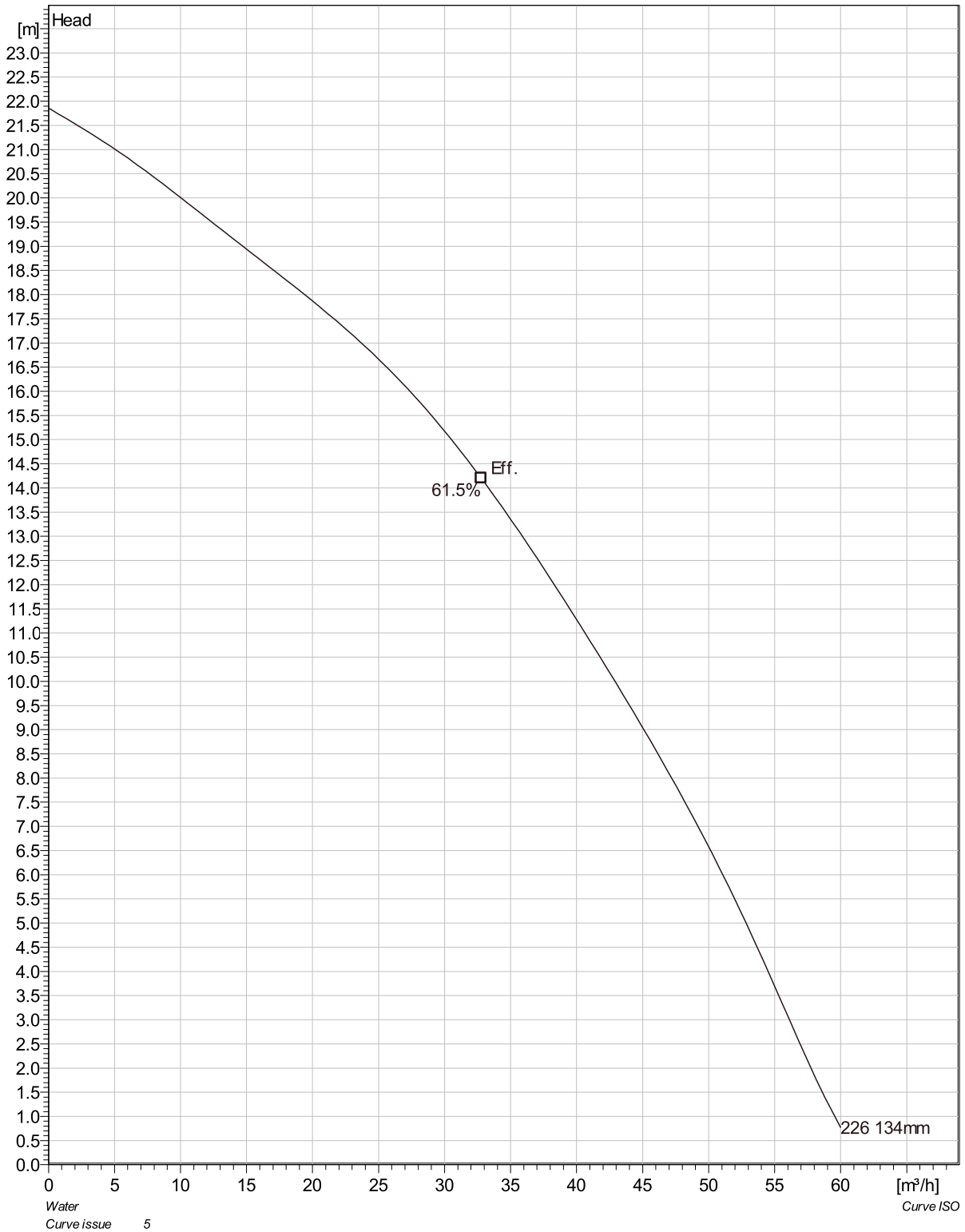
Discharge Flange Diameter 75 mm  
 Suction Flange Diameter 63 mm  
 Impeller diameter 134 mm  
 Number of blades 5

#### Motor

Motor # B2620.172 13-10-2BB-W 2.2KW  
 Stator variant 18  
 Frequency 50 Hz  
 Rated voltage 400 V  
 Number of poles 2  
 Phases 3~  
 Rated power 2.2 kW  
 Rated current 4.7 A  
 Starting current 27 A  
 Rated speed 2800 rpm

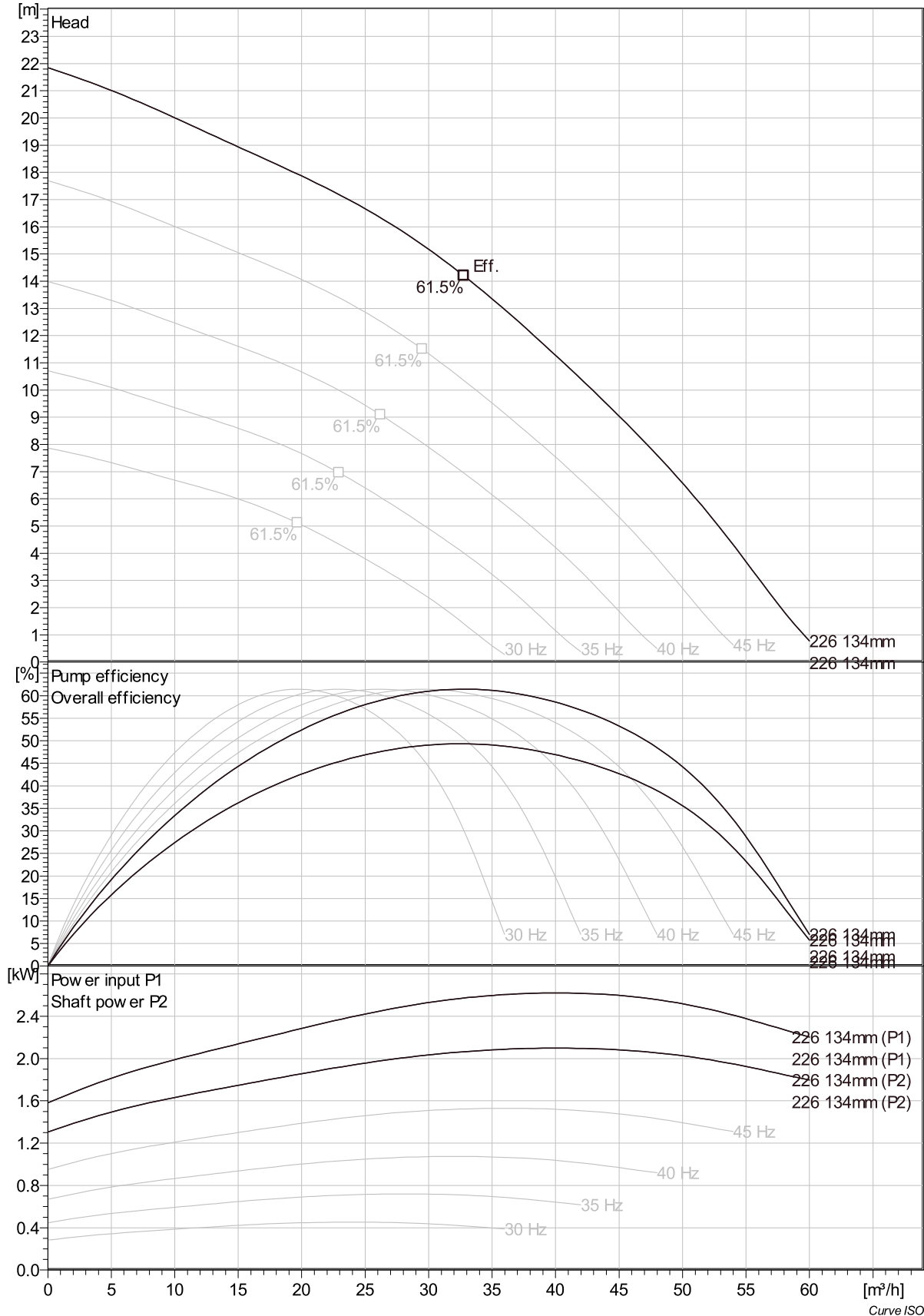
Power factor  
 1/1 Load 0.88  
 3/4 Load 0.83  
 1/2 Load 0.72  
 Motor efficiency  
 1/1 Load 79.5 %  
 3/4 Load 82.0 %  
 1/2 Load 82.3 %





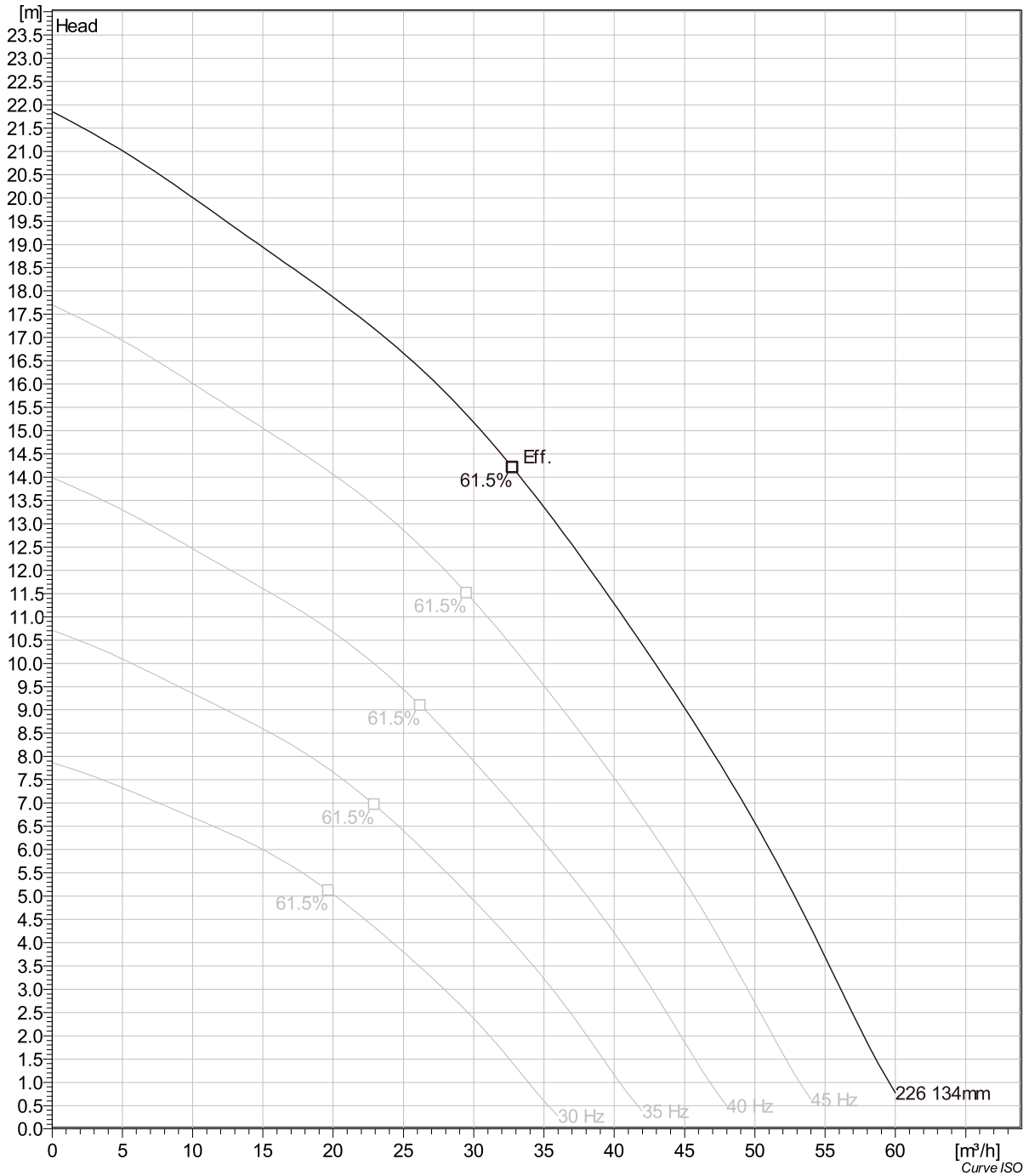
Project	Project ID	Created by	Created on	Last update
			4/13/2018	

## BS 2620 MT 3~ 226 VFD Curve



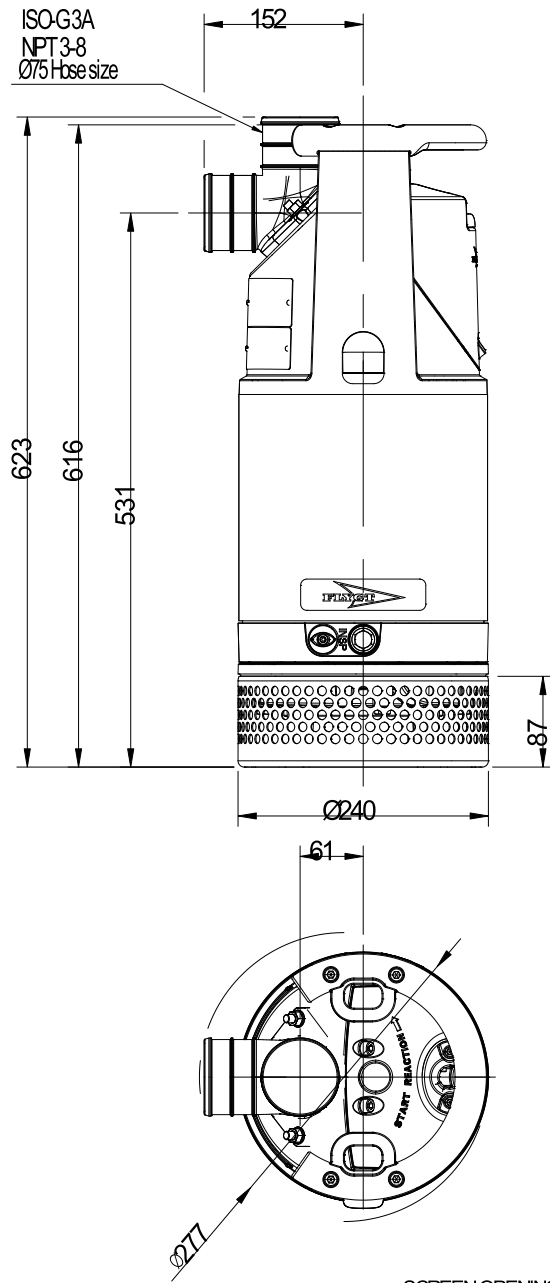
Project	Project ID	Created by	Created on	Last update
			4/13/2018	

## BS 2620 MT 3~ 226 VFD Analysis



Project	Project ID	Created by	Created on	Last update
			4/13/2018	

## BS 2620 MT 3~ 226 Dimensional drawing



SCREEN OPENING Ø9

Weight (kg)
Pump
29

BS,KS 2620.172 MT

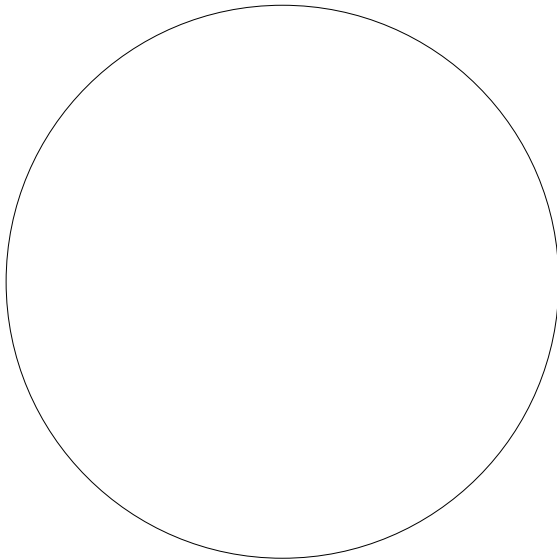
Project	Project ID	Created by	Created on 4/13/2018	Last update
---------	------------	------------	-------------------------	-------------

## BS 2620 MT 3~ 226

### Life cycle costs (LCC)

Total lifetime	15	Inflation rate (rate of price increases)	2 %
Annual operating time	5600	Interest rate (for investment)	3 %
Energy cost per kWh	0.00 EUR		
Power input P1			

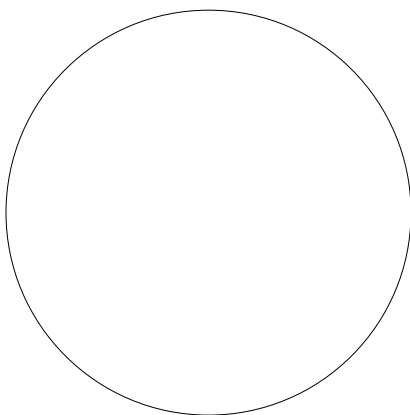
#### Total costs



- 0%** **0.00 EUR** Energy
- 0%** **0.00 EUR** Investment costs
- 0%** **0.00 EUR** Installation & commissioning
- 0%** **0.00 EUR** Operating cost
- 0%** **0.00 EUR** Maintenance & repair
- 0%** **0.00 EUR** Downtime
- 0%** **0.00 EUR** Environmental
- 0%** **0.00 EUR** Decommissioning

EUR

#### First year costs



- 0%** **0.00 EUR** Energy (1st year)
- 0%** **0.00 EUR** Investment costs (1st year)
- 0%** **0.00 EUR** Installation & commissioning (1st year)
- 0%** **0.00 EUR** Operating cost (1st year)
- 0%** **0.00 EUR** Maintenance & repair (1st year)
- 0%** **0.00 EUR** Downtime (1st year)
- 0%** **0.00 EUR** Environmental (1st year)
- 0%** **0.00 EUR** Decommissioning (1st year)

EUR

*Disclaimer: The calculations and the results are based on user input values and general assumptions and provide only estimated costs for the input data. Xylem inc can therefore not guarantee that the estimated savings will actually occur.*

Project	Project ID	Created by	Created on 4/13/2018	Last update
---------	------------	------------	-------------------------	-------------