

BS 2201 HT 3~ 259

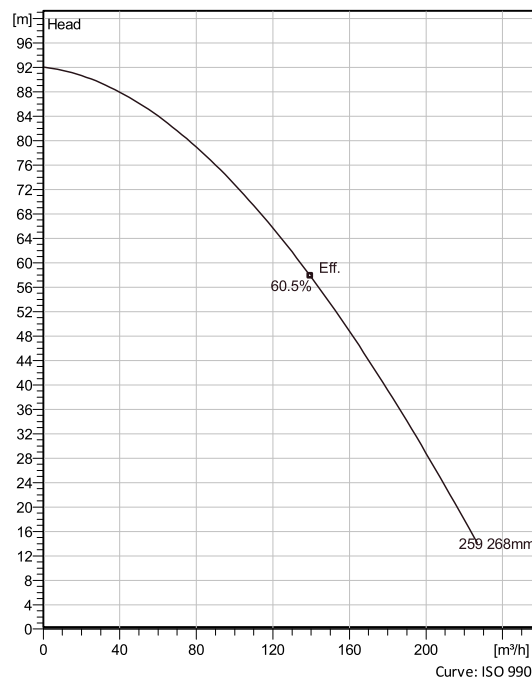
Portable pumps ideal for applications in which the water or liquid contains concentrations of abrasives.



Technical specification



Curves according to: Water, pure Water, pure [100%], 4 °C, 999.9 kg/m³, 1.5692 mm²/s



Nominal (mean) data shown. Under- and over-performance from this data should be expected due to standard manufacturing tolerances. Please consult your local Flygt representative for performance guarantees.

Configuration

Motor number B2201.012 30-19-2AA-W 37KW	Installation type S - Portable Semi permanent, Wet
Impeller diameter 268 mm	Discharge diameter 100 mm

Pump information

Impeller diameter 268 mm
Discharge diameter 100 mm
Inlet diameter
Maximum operating speed 2945 rpm
Number of blades 5
Max. fluid temperature 40 °C

Material

Impeller Hard-Iron
Stator housing material Aluminium

Project Xylect-21303452
Block

Created by
Created on 10/18/2023 **Last update** 10/18/2023

BS 2201 HT 3~ 259

Technical specification



Motor - General

Motor number B2201.012 30-19-2AA-W 37KW	Phases 3~	Rated speed 2945 rpm	Rated power 37 kW
Approval No	Number of poles 2	Rated current 65 A	Stator variant 38
Frequency 50 Hz	Rated voltage 400 V	Insulation class H	Type of Duty S1
Version code 012			

Motor - Technical

Power factor - 1/1 Load 0.92	Motor efficiency - 1/1 Load 90.0 %	Total moment of inertia 0.174 kg m ²	Starts per hour max. 15
Power factor - 3/4 Load 0.90	Motor efficiency - 3/4 Load 90.6 %	Starting current, direct starting 430 A	
Power factor - 1/2 Load 0.85	Motor efficiency - 1/2 Load 90.1 %	Starting current, star-delta 143 A	

Project Xylect-21303452
Block

Created by
Created on 10/18/2023 **Last update** 10/18/2023

BS 2201 HT 3~ 259

Performance curve

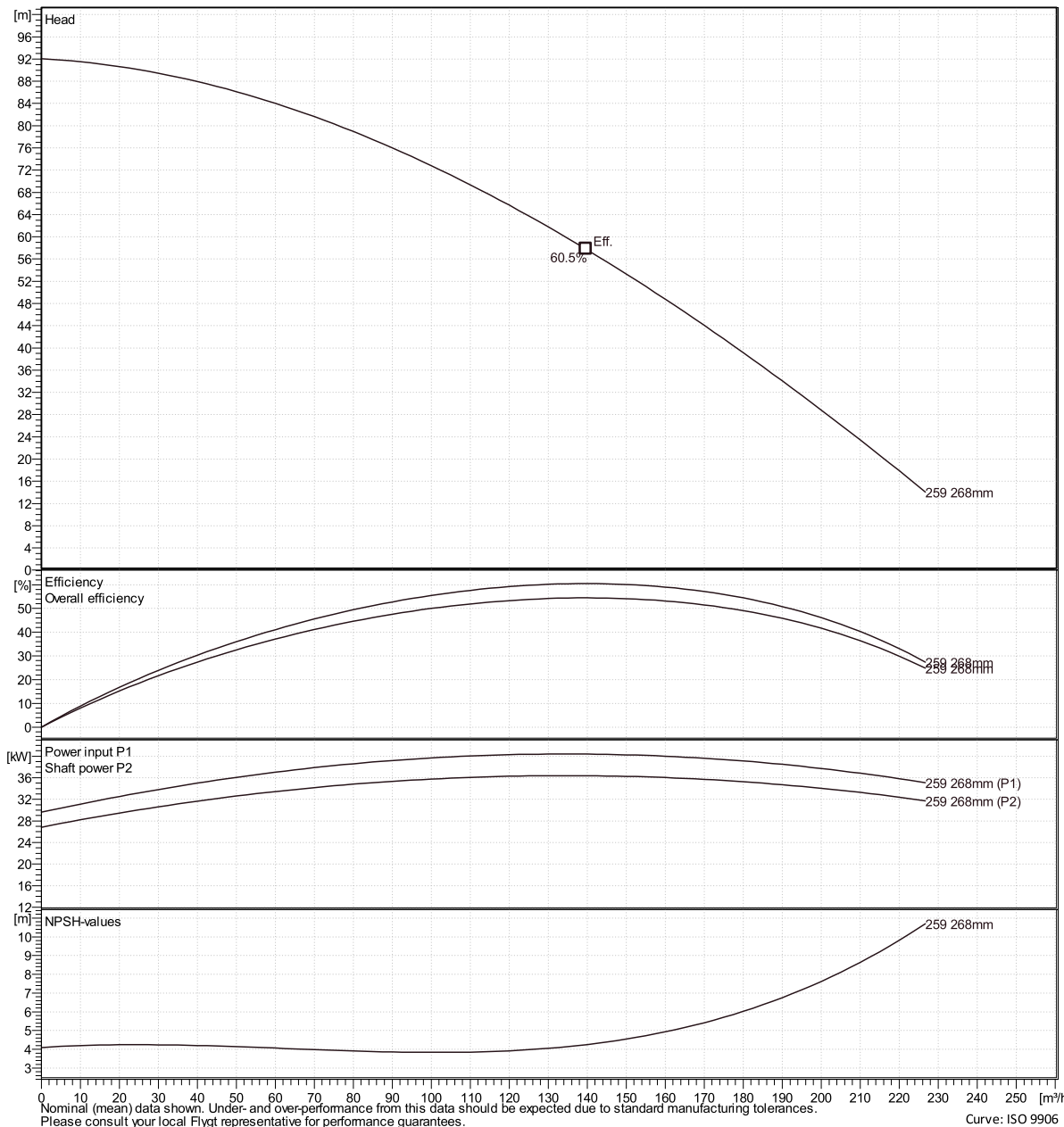


Duty point

Flow

Head

Curves according to: Water, pure Water, pure [100%], 4 °C, 999.9 kg/m³, 1.5692 mm²/s



Nominal (mean) data shown. Under- and over-performance from this data should be expected due to standard manufacturing tolerances. Please consult your local Flygt representative for performance guarantees. Curve: ISO 9906

Xylect-21303452

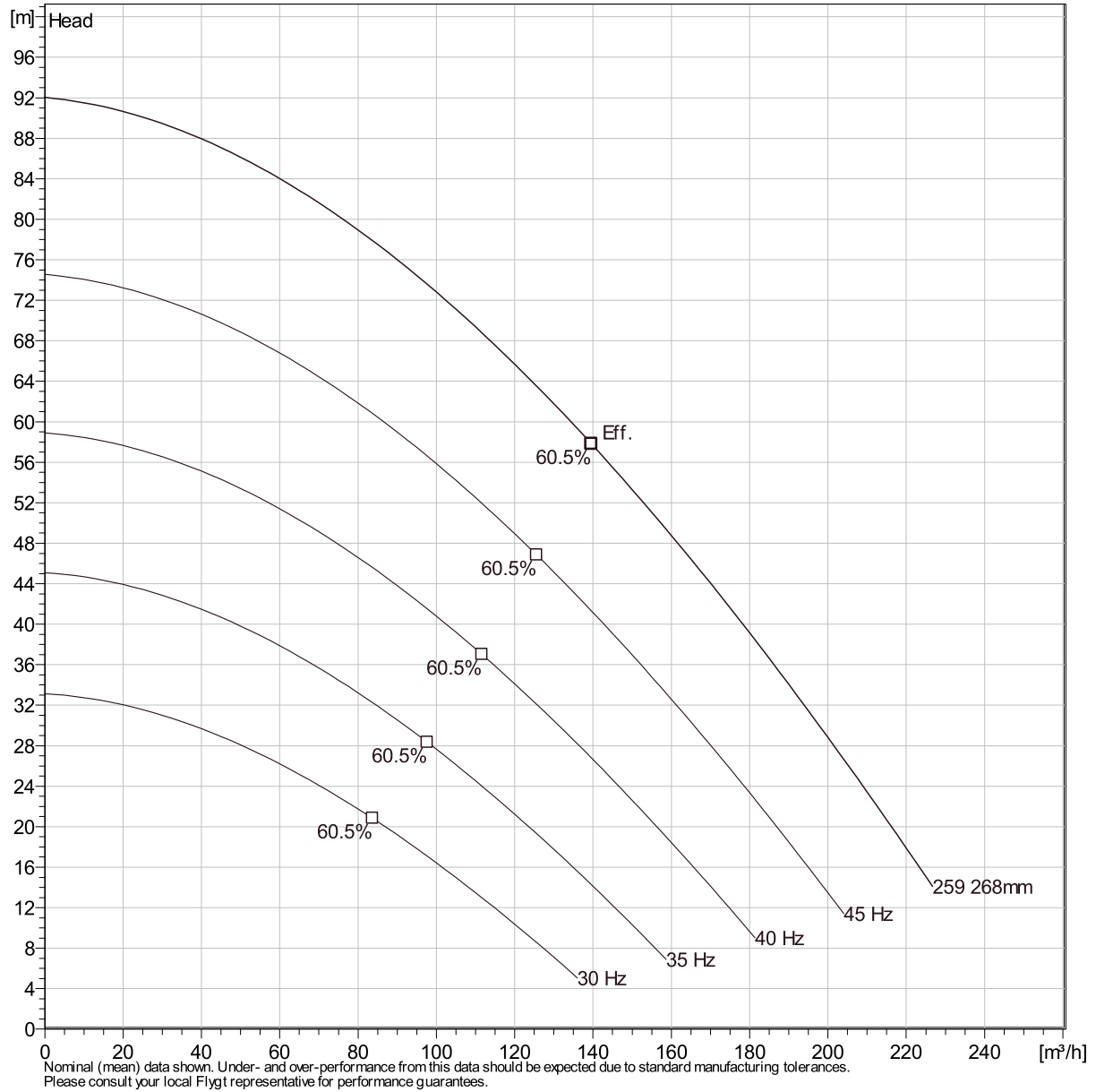
Created on 10/18/2023 Last update 10/18/2023

BS 2201 HT 3~ 259

Duty Analysis



Curves according to: Water, pure [100%] ; 4°C; 999.9kg/m³; 1.5692mm²/s



Operating characteristics

Pumps / Systems	Flow m ³ /h	Head m	Shaft power kW	Flow m ³ /h	Head m	Shaft power kW	Hydr. eff.	Spec. Energy kWh/m ³	NPSHre m
-----------------	---------------------------	-----------	-------------------	---------------------------	-----------	-------------------	------------	------------------------------------	-------------

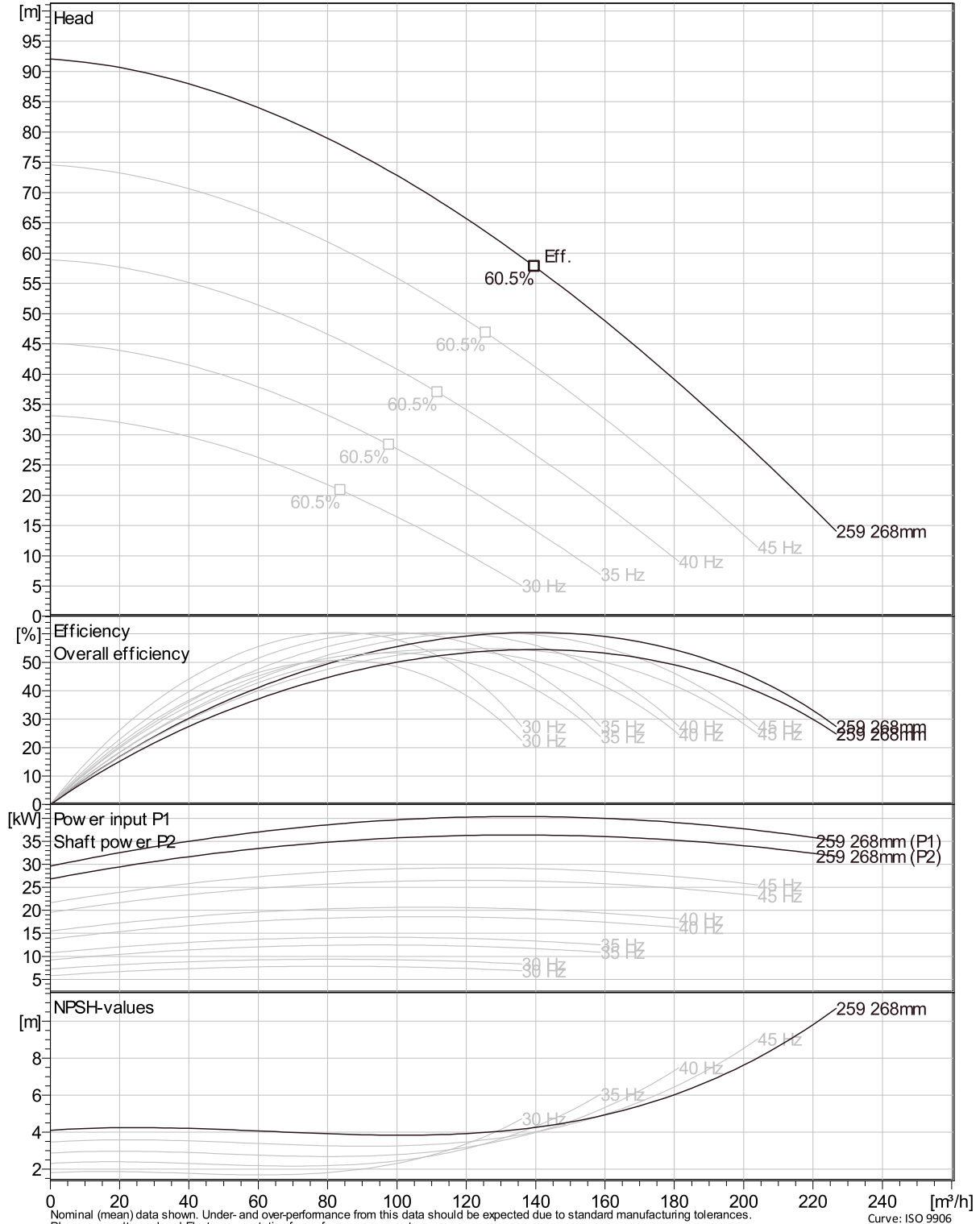
Project		Created by	
Block	Xylect-21303452	Created on	10/18/2023
		Last update	10/18/2023

BS 2201 HT 3~ 259

VFD Curve



Curves according to: Water, pure, 4 °C, 999.9 kg/m³, 1.5692 mm²/s

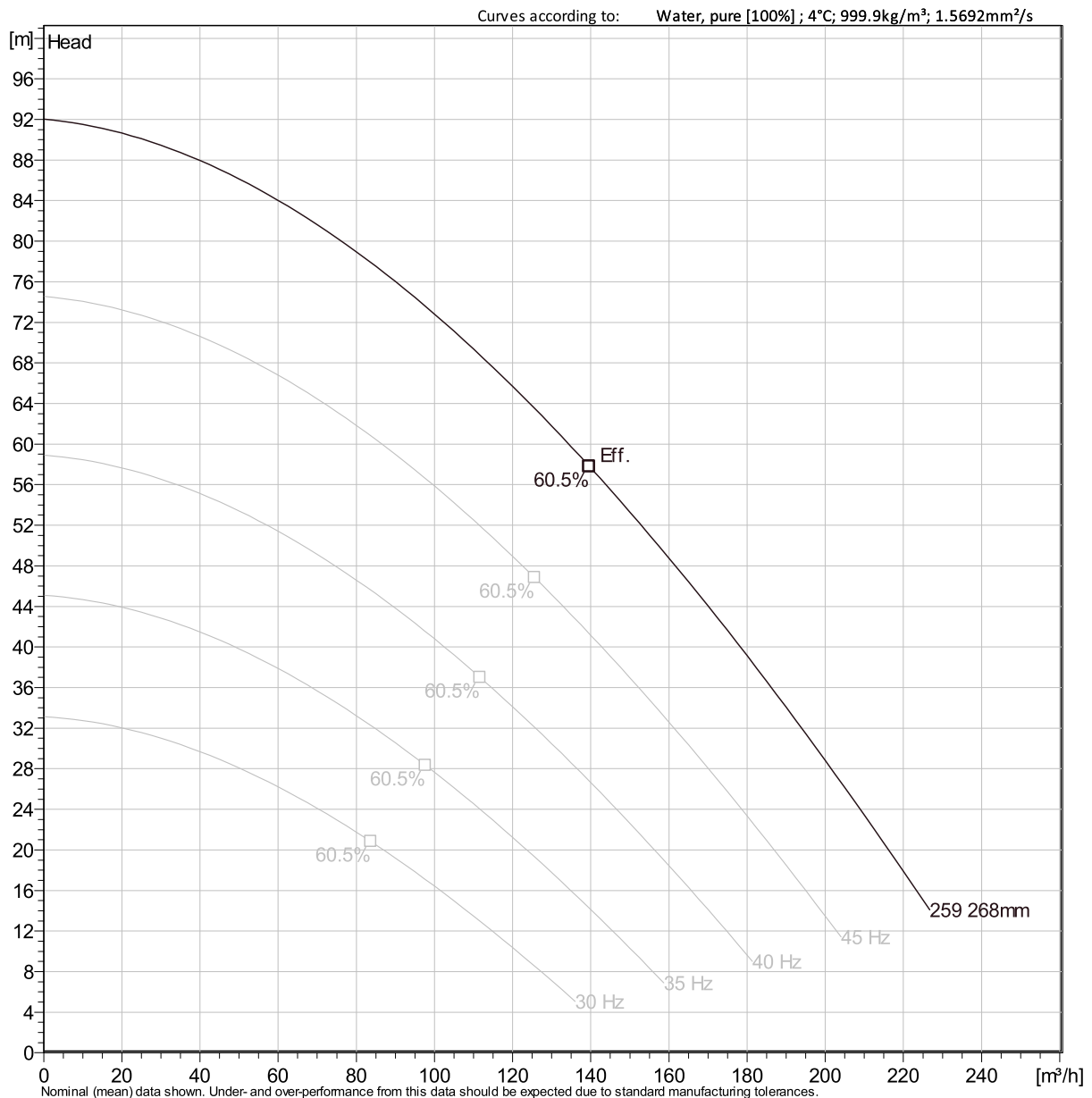


Nominal (mean) data shown. Under- and over-performance from this data should be expected due to standard manufacturing tolerances. Please consult your local Flygt representative for performance guarantees. Curve: ISO 9906

Project Xylect-21303452 Created by
 Block Created on 10/18/2023 Last update 10/18/2023

BS 2201 HT 3~ 259

VFD Analysis



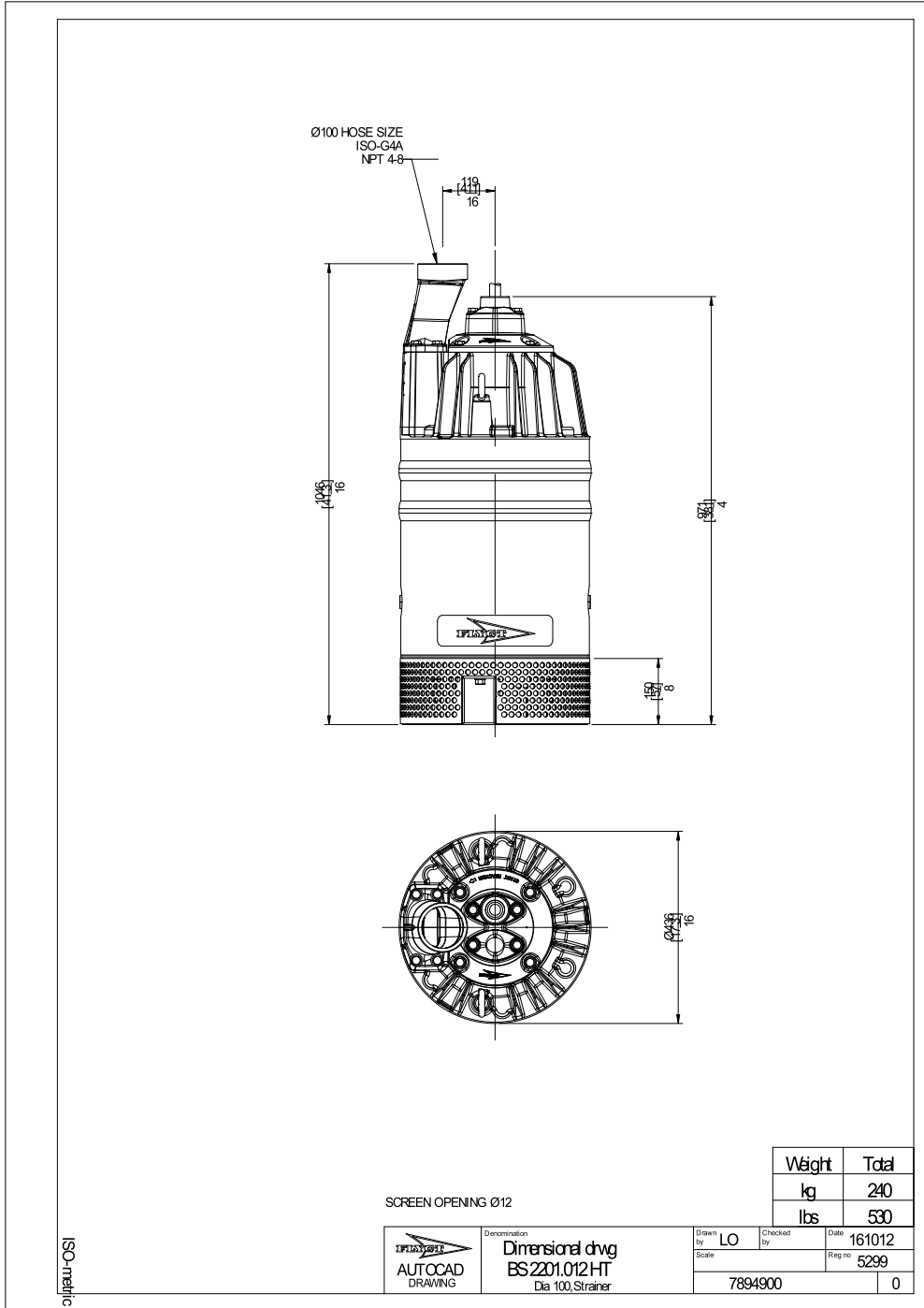
Operating Characteristics

Pumps / Systems	Frequency	Flow	Head	Shaft power	Flow	Head	Shaft power	Hydr. eff.	Specific energy	NPSHre
		m ³ /h	m	kW	m ³ /h	m	kW		kWh/m ³	m

Project	Xylect-21303452	Created by	
Block		Created on	10/18/2023
		Last update	10/18/2023

BS 2201 HT 3~ 259

Dimensional drawing



Project	Xylect-21303452	Created by	
Block		Created on	10/18/2023
		Last update	10/18/2023