

BS 2125 MT 3~ 231

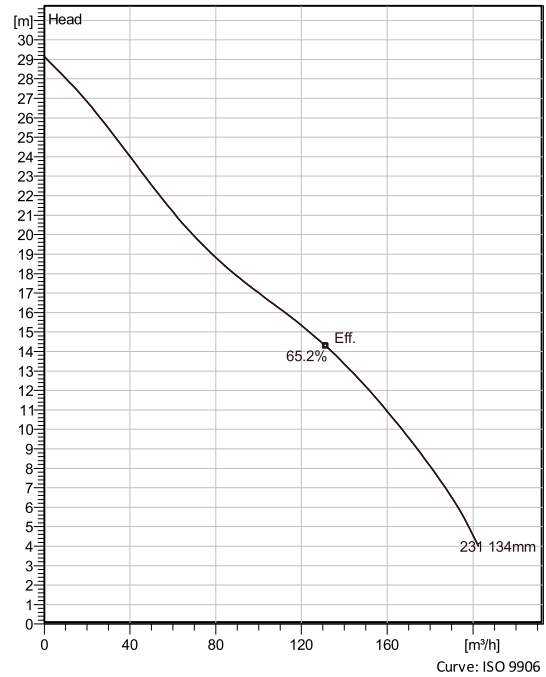
Portable pumps ideal for applications in which the water or liquid contains concentrations of abrasives.



Technical specification



Curves according to: Water [100%], 4 °C, 999.9 kg/m³, 1.569 mm²/s



Configuration

Motor number B2125.320 19-13-2FF-W 8KW	Installation type S - Portable Semi permanent, Wet
Impeller diameter 134 mm	Discharge diameter 100 mm

Pump information

Impeller diameter 134 mm
Discharge diameter 100 mm
Inlet diameter 112 mm
Maximum operating speed 2895 rpm
Number of blades 4

Materials

Impeller Hard-Iron
Stator housing material Aluminium

Project
Block

Created by
Created on 11/15/2019

Last update

BS 2125 MT 3~ 231

Technical specification



Motor - General

Motor number B2125.320 19-13-2FF-W 8KW	Phases 3~	Rated speed 2895 rpm	Rated power 8 kW
Approval No	Number of poles 2	Rated current 15 A	Stator variant 2
Frequency 50 Hz	Rated voltage 400 V	Insulation class H	Type of Duty S1

Motor - Technical

Power factor - 1/1 Load 0.87	Motor efficiency - 1/1 Load 85.5 %	Total moment of inertia -0.99 kg m ²	Starts per hour max. 15
Power factor - 3/4 Load 0.83	Motor efficiency - 3/4 Load 85.5 %	Starting current, direct starting 128 A	
Power factor - 1/2 Load 0.73	Motor efficiency - 1/2 Load 83.5 %	Starting current, star-delta 42.6 A	

Project
Block

Created by
Created on 11/15/2019

Last update

BS 2125 MT 3~ 231

Performance curve

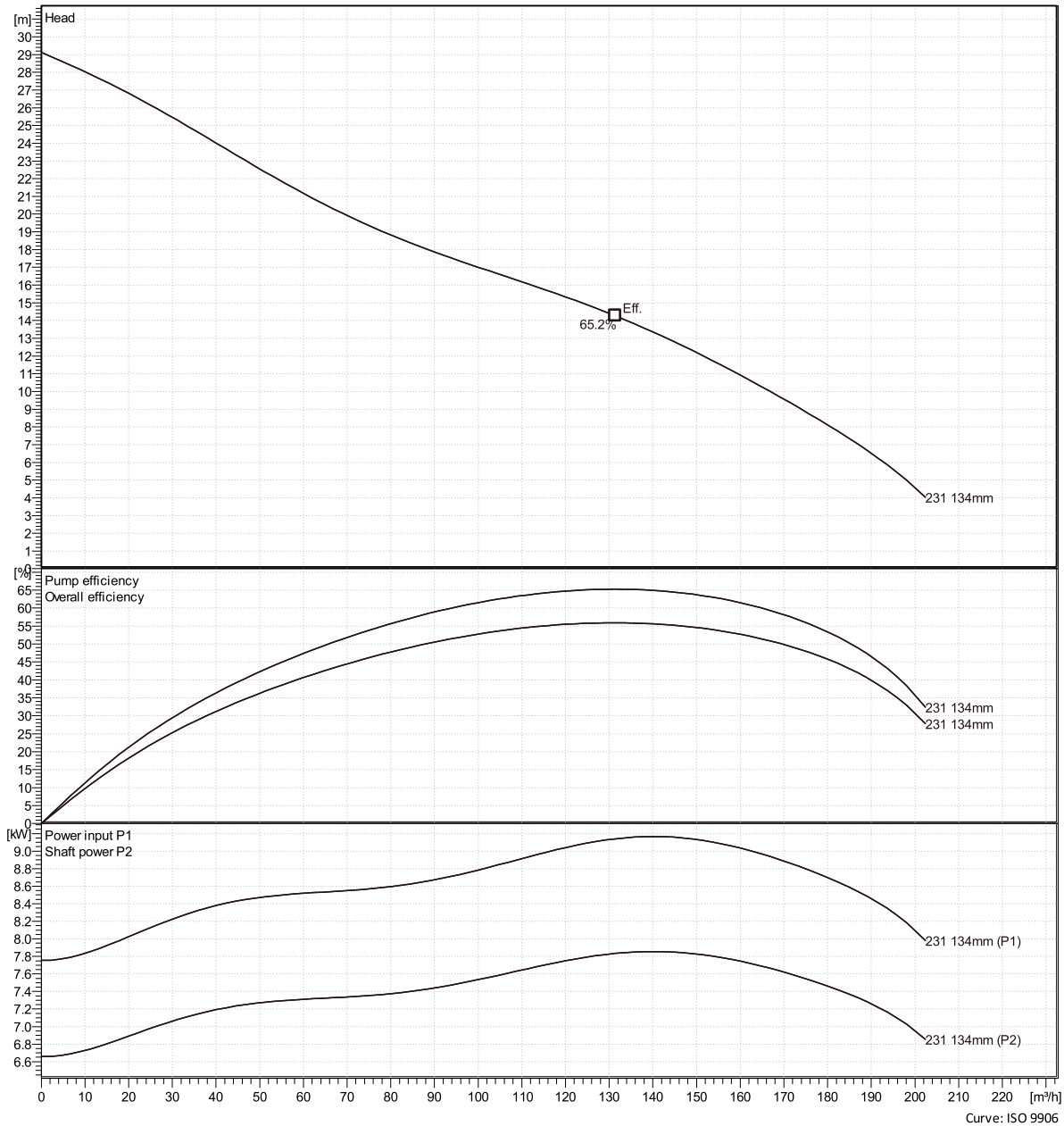


Duty point

Flow

Head

Curves according to: Water [100%], 4 °C, 999.9 kg/m³, 1.569 mm²/s



Project
Block

Created by
Created on 11/15/2019

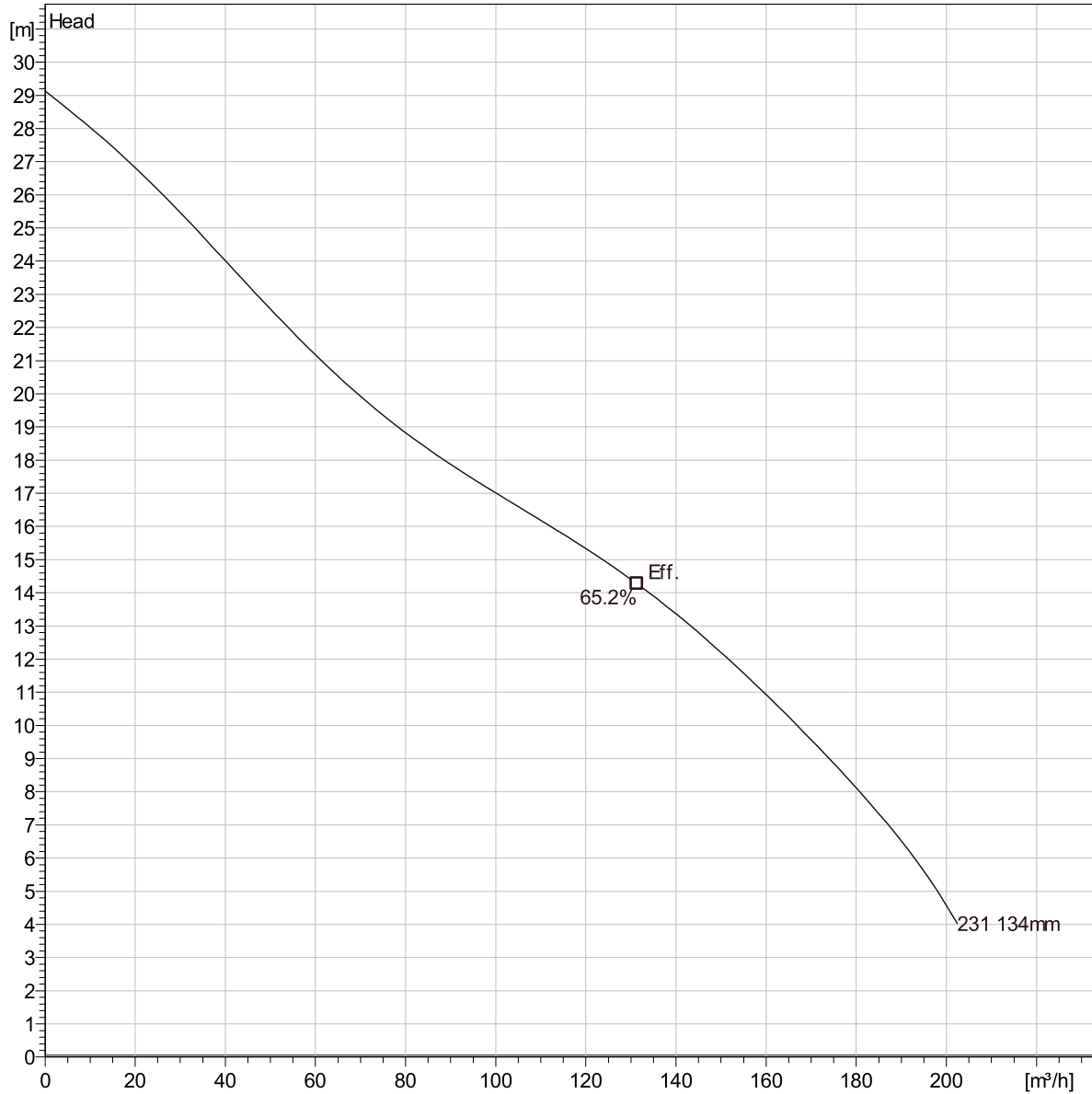
Last update

BS 2125 MT 3~ 231

Duty Analysis



Curves according to: Water [100%], 4 °C, 999.9 kg/m³, 1.569 mm²/s



Curve: ISO 9906

Operating characteristics

Pumps/Systems	Flow	Head	Shaft power	Flow	Head	Shaft power	Hydr.eff.	Specific energy	NPSHr
---------------	------	------	-------------	------	------	-------------	-----------	-----------------	-------

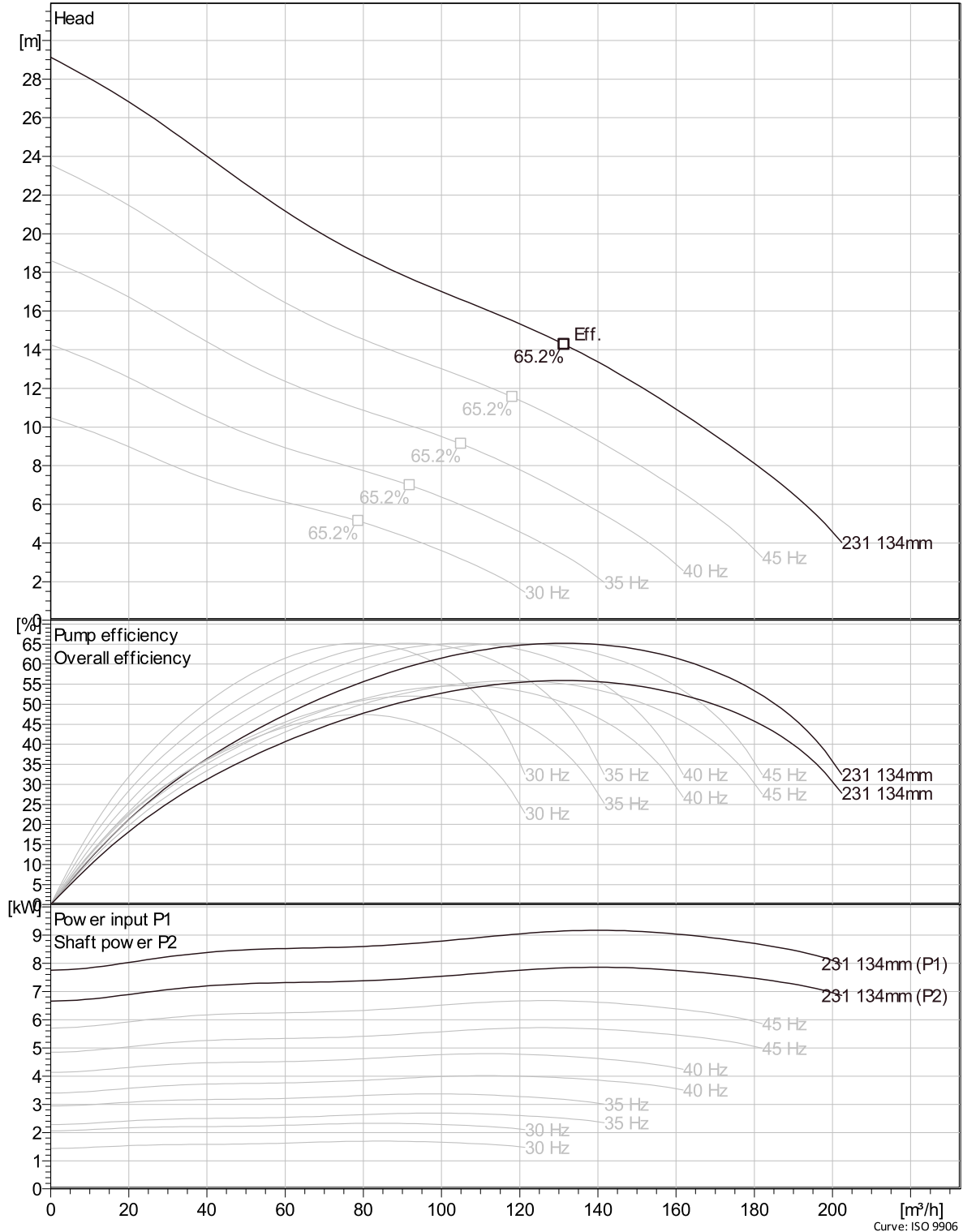
Project	Created by	Last update
Block	Created on 11/15/2019	

BS 2125 MT 3~ 231

VFD Curve



Curves according to: Water [100%], 4 °C, 999.9 kg/m³, 1.569 mm²/s



Project
Block

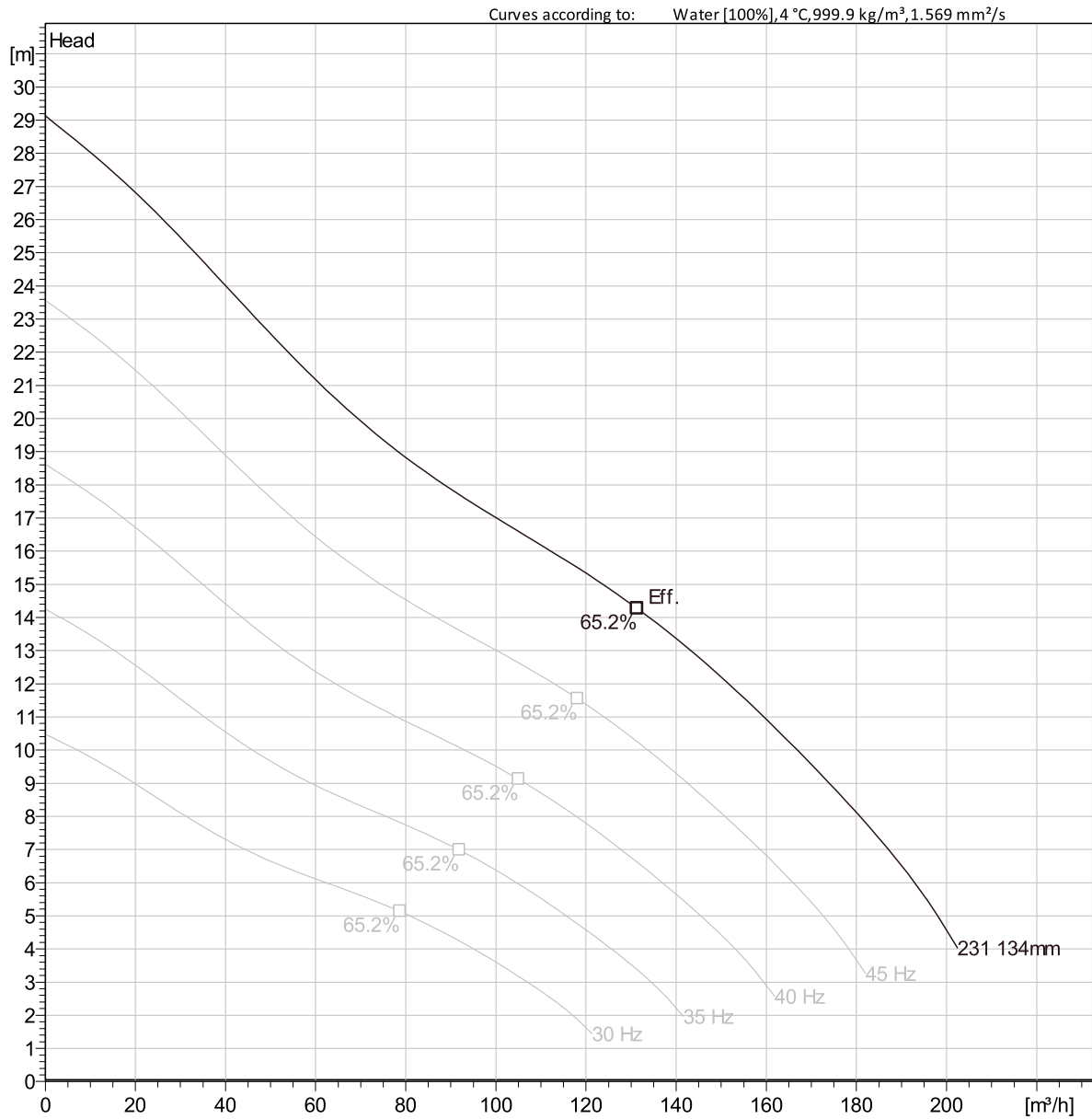
Created by
Created on 11/15/2019

Last update

Curve: ISO 9906

BS 2125 MT 3~ 231

VFD Analysis



Curve: ISO 9906

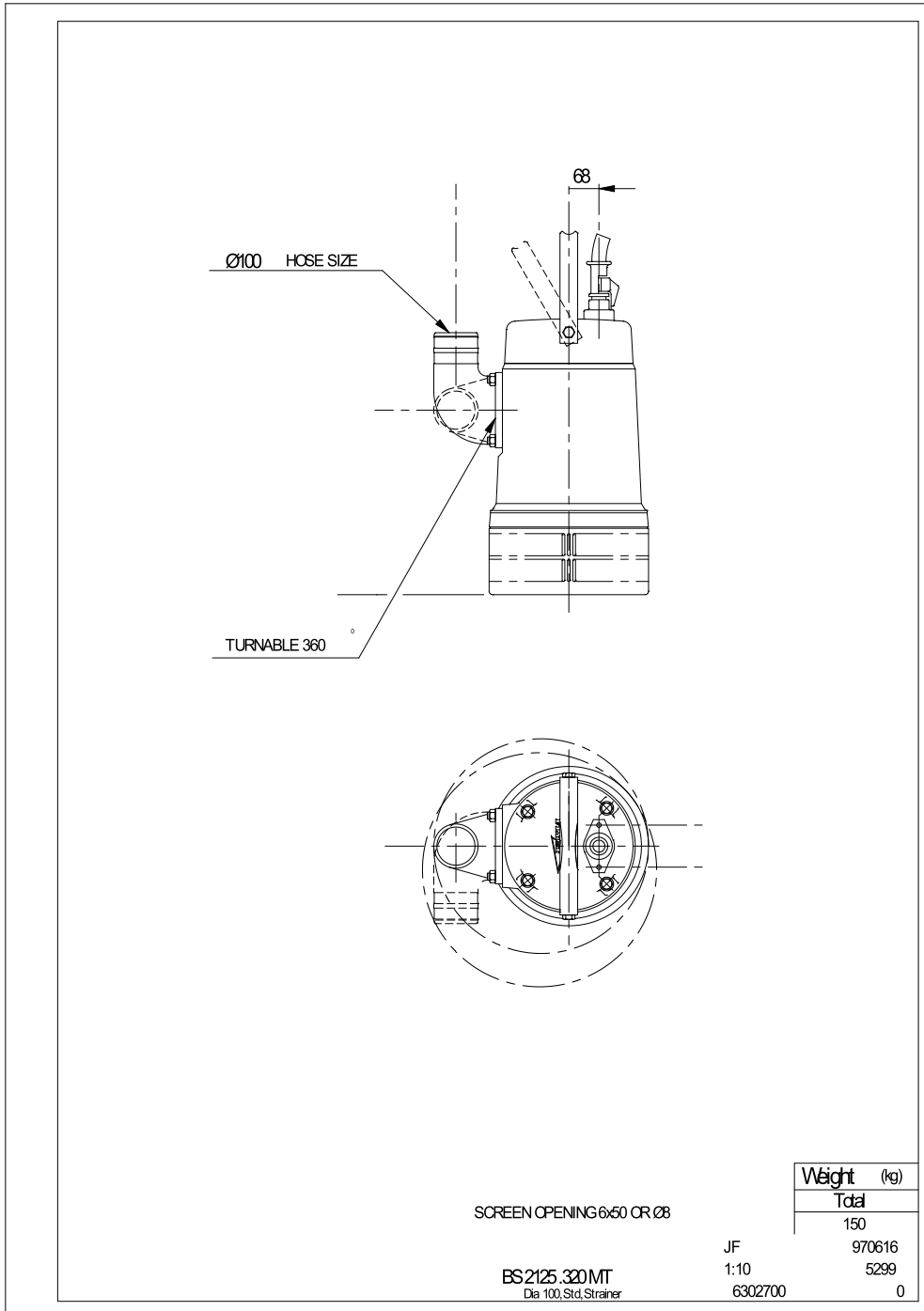
Operating Characteristics

Pumps/Systems	Frequency	Flow	Head	Shaft power	Flow	Head	Shaft power	Hydr.eff.	Specific energy	NPSHr
---------------	-----------	------	------	-------------	------	------	-------------	-----------	-----------------	-------

Project	Created by	Last update
Block	Created on 11/15/2019	

BS 2125 MT 3~ 231

Dimensional drawing



Project
Block

Created by
Created on 11/15/2019

Last update